



## Puerto Rico

Unintentional injuries and violence are the leading cause of death, hospitalization, and disability for children ages 1-18. CSN has prepared this fact sheet to provide a state snapshot of injury and violence prevention data, resources, and activities. This fact sheet provides a state snapshot of data on the injury-related Maternal and Child Health Block Grant National Performance Measures and Health Status Indicators, with a special focus on disparities based on race, gender, and rural/urban residence.

The Children's Safety Network (CSN) National Injury and Violence Prevention Resource Center, funded by the Maternal and Child Health (MCH) Bureau, works with states to utilize a science-based, public health approach for injury and violence prevention (IVP). CSN provides information and technical assistance on injury surveillance and data; needs assessments; best practices; and the design, implementation, and evaluation of programs to prevent child and adolescent injuries.

### Major Causes of Injury Death

Understanding injury rankings among other causes of death is important in determining their physical and economic role in each state. Knowing what types of injuries cause the majority of deaths and hospitalizations can inform program planning and development efforts. Table 1 shows the top 5 causes of death by age group in the state. Unintentional and intentional injury deaths are highlighted. Table 2 shows the top 5 causes of injury death by age group in the state. Intentional injury deaths are highlighted.

Data for Table 1 is not available for Puerto Rico.

**Table 2. Leading Causes and Total 5-Year Incidence of Injury Deaths by Age Group, Puerto Rico, 2004-2008**

		Age Groups					
Rank	<1	1 - 4	5 - 9		10 - 14	15-19	20-24
1	Homicide ****	MV Traffic 22	MV Traffic 11		MV Traffic 26	Homicide 404	Homicide 960
2	MV Traffic ****	Drowning ****	Fall ****		Homicide 18	MV Traffic 227	MV Traffic 344
3	Suffocation ****	Homicide ****	Drowning ****	Homicide ****	Drowning 11	Suicide 40	Suicide 104
4	Three Tied* ****	Fall ****	Fire/Burn ****	Pedestrian, Other ****	Suicide ****	Drowning 27	Poisoning 67
5		Five Tied** ****	Five Tied*** ****		Suffocation ****	Firearm 19	Firearm 38

Note. \*For ages <1, three mechanisms were tied for the fourth ranking including Drowning, Unspecified, and Natural/environmental. Each of these mechanisms had 10 or fewer cases. \*\*For ages 1-4, five mechanisms were tied for the fifth ranking including Firearm; Suffocation; Pedestrian, Other; Struck by/against; and Other Specified, Classifiable. Each of these mechanisms had 10 or fewer cases. \*\*For ages 5-9, five mechanisms were tied for the fifth ranking including Suicide; Suffocation; Unspecified; Struck by/against; and Other Specified, Classifiable. Each of these mechanisms had 10 or fewer cases. All mechanisms of suicide and homicide were combined according to intent. Each listed mechanism is unintentional except those otherwise noted. \*\*\*\* = indicates that the cell values range from 1-10 and are suppressed for data confidentiality purposes.

Table 2 Source: National Center for Health Statistics, Multiple Cause of Death Data, 2004-2008.

### National Performance Measures

The Federal Maternal and Child Health Bureau Block Grant program requires State MCH programs to report on 18 National Performance Measures (NPM), two of which directly address injuries. NPM #10 addresses the rate of deaths to children aged 14 years and younger caused by motor vehicle crashes per 100,000 children. NPM #16 addresses the rate of suicide deaths among youths aged 15-19.

The following figures provide information related to NPMs #10 and #16.

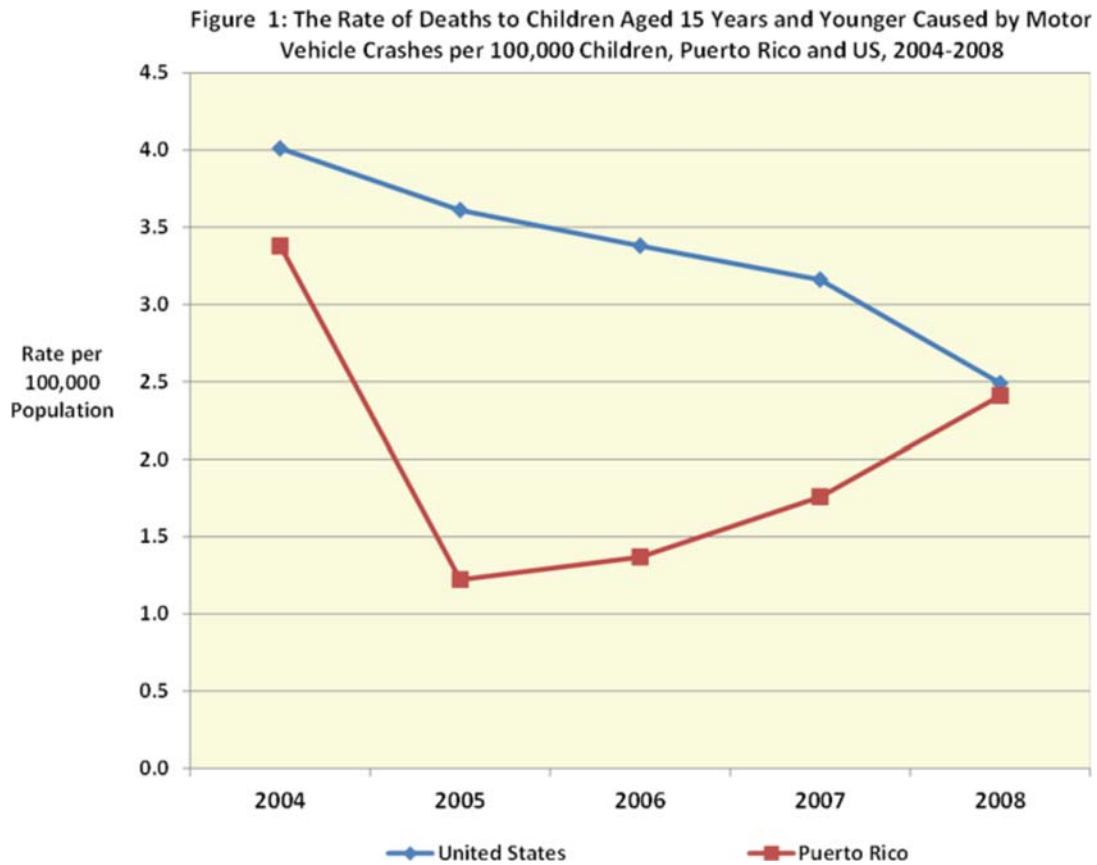


Figure 1 Source: [WISQARS Fatal Injury Reports, 2004-2008](#) and [WISQARS Injury Mortality Reports, 2003-2007](#)

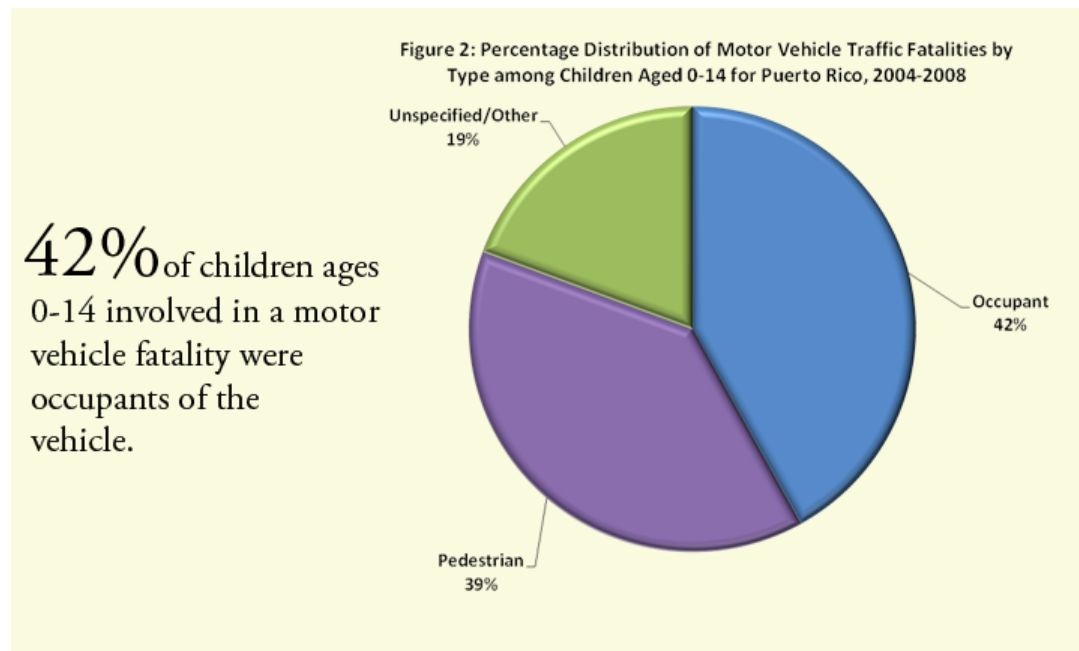
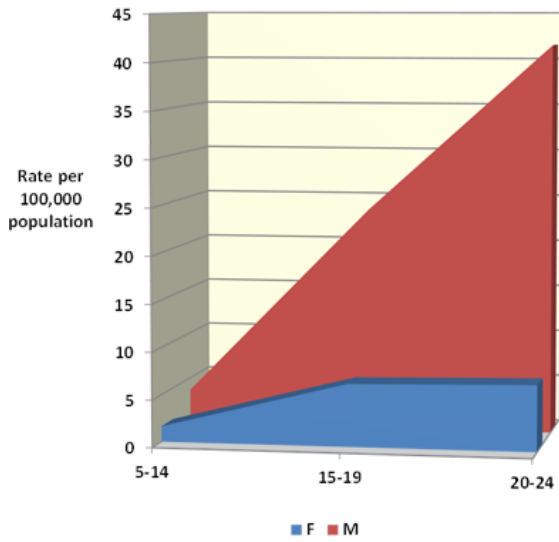


Figure 2 Source: [WISQARS Fatal Injury Reports, 2004-2008](#) and [WISQARS Injury Mortality Reports, 2003-2007](#)

Figure 3 Data is not available for Puerto Rico.

Figure 4: Motor Vehicle Traffic Fatality Rates by Gender among Children and Youths Aged 5-24 for Puerto Rico, 2004-2008



Data for Figure 5: The Rate (per 100,000) of Motor Vehicle Traffic Fatalities By Urbanicity Is not Available

Figure 4 Source: [WISQARS Fatal Injury Reports, 2004-2008](#) and [WISQARS Injury Mortality Reports, 2003-2007](#)

Figure 5 Source: [CDC WONDER Multiple Cause of Death data, 2003-2007](#) and [Urban-Rural Definition Classification System](#)

Figure 6: The Rate (per 100,000) of Suicide Deaths among Youths Aged 15 to 20, Puerto Rico and US, 2005-2008

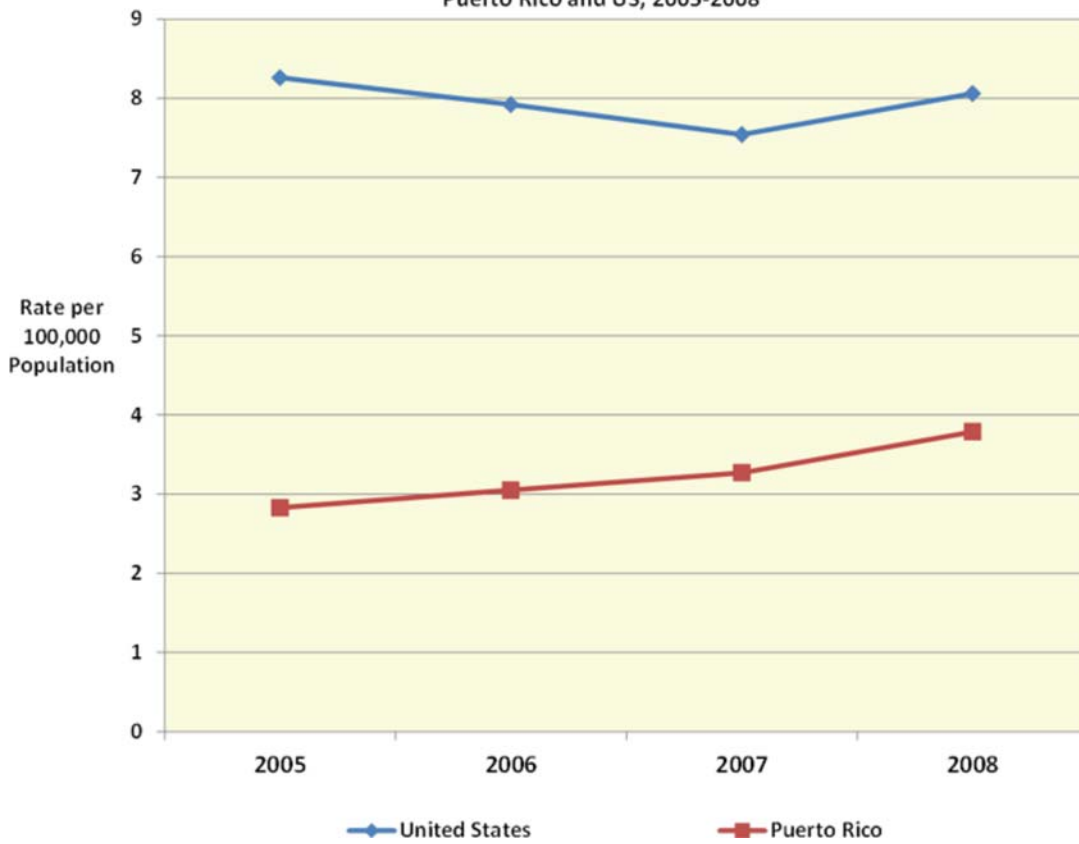
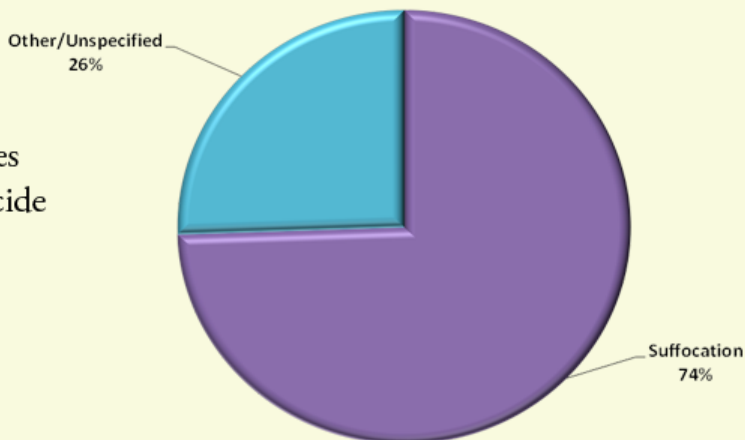


Figure 6 Source: [WISQARS Fatal Injury Reports, 2004-2008](#) and [WISQARS Injury Mortality Reports, 2003-2007](#)

Figure 7: Percentage Distribution of Completed Suicides by Means among Youths Aged 15 to 20, Puerto Rico, 2005-2008

74% of youth ages 15-20 completed suicide by suffocation.



Note: Unspecified/Other includes all self-inflicted fatal injuries in which the mechanism was not identified or the coded mechanism was other than those named in the pie chart.

Figure 7 Source: [WISQARS Fatal Injury Reports, 2004-2008](#) and [WISQARS Injury Mortality Reports, 2003-2007](#)

Figure 8: Percentage of High School Aged Children with Suicide Ideation, Puerto Rico and US, 1991-2005

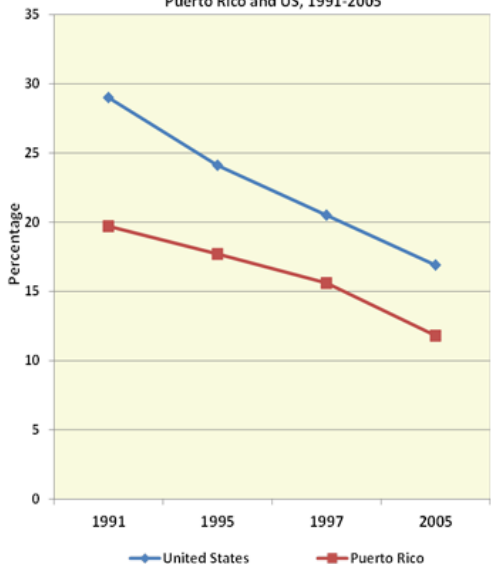
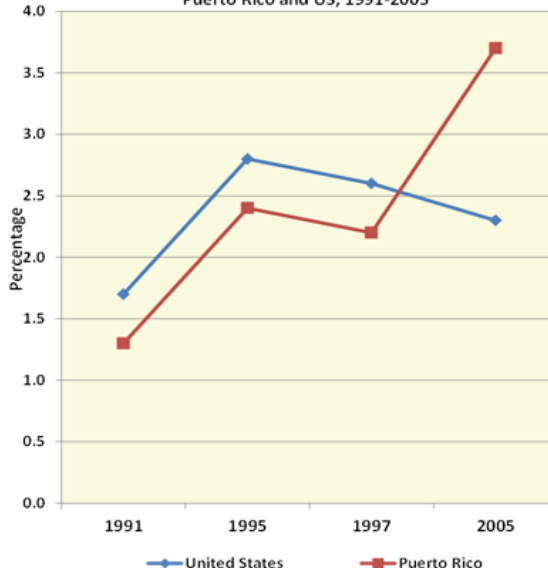


Figure 9: The Percentage of High School-Aged Children Treated for Suicide Attempt, Puerto Rico and US, 1991-2005



Figures 8 & 9 Source: [Youth Online: High School Youth Risk Behavior Survey \(YRBS\), 2003-2009](#)

### State Specific Performance Measures and Priority Needs

Each state develops up to 7 – 10 State Performance Measures and priority needs. The following provides information about the states' selected 2012 injury-related performance measures and priority needs.

Puerto Rico currently has the following injury-related State Performance Measure:

- The rate per 100,000 of emergency room visits due to all unintentional injuries among children aged 1 to 14 years

Puerto Rico currently has the following injury-related priority need:

- Reduce unintentional injuries among children and adolescents.

This fact sheet presents a cursory review of the injury morbidity and mortality data available for the state. The figures and tables in this fact sheet can help you understand the state's progress in addressing motor vehicle traffic injuries and suicide. To target and address these and other injury issues, it is critical to understand this data. CSN can assist you in conducting detailed data analyses, utilizing surveillance systems, and undertaking needs assessments. For assistance, contact the Children's Safety Network at [csninfo@edc.org](mailto:csninfo@edc.org).

### State Contact Information

**MCH Directors:** Maria del Carmen Rullan, [mrullan@salud.gov.pr](mailto:mrullan@salud.gov.pr)

Manuel Vargas Bernal, [mivargas@salud.gov.pr](mailto:mivargas@salud.gov.pr)

**EMSC Contact:** Wanda Arbelo, [wanda.arbelo@upr.edu](mailto:wanda.arbelo@upr.edu)

#### Connect with the Children's Safety Network

43 Foundry Avenue Waltham, MA 02453-8313

CSN's website: <http://www.ChildrensSafetyNetwork.org>

CSN on Facebook: <http://www.facebook.com/childrenssafetynetwork>

CSN on Twitter: <http://www.twitter.com/childrenssafety>

Register for the CSN newsletter: <http://go.edc.org/csn-newsletter>

Need TA? Have Questions? E-mail: [csninfo@edc.org](mailto:csninfo@edc.org)

CSN is funded by the Health Resources and Services Administration's Maternal and Child Health Bureau (U.S. Department of Health and Human Services). A project of the Education Development Center, Inc.

January 2012