



Washington 2012 State Fact Sheet

Unintentional injuries and violence are the leading causes of death, hospitalization, and disability for children ages 1-18. This fact sheet provides a state snapshot of data on the injury-related Maternal and Child Health Block Grant National Performance Measures and Health Status Indicators, with a special focus on disparities based on race, gender, and rural/urban residence. The fact sheet is intended to be a helpful and easy-to-use tool for needs assessments, planning, program development, and presentations.

The Children's Safety Network (CSN) National Injury and Violence Prevention Resource Center, funded by the Maternal and Child Health (MCH) Bureau, works with states to utilize a science-based, public health approach for injury and violence prevention (IVP). CSN is available to provide information and technical assistance on injury surveillance and data; needs assessments; best practices; and the design, implementation, and evaluation of programs to prevent child and adolescent injuries.

Major Causes of Injury Death

Understanding injury rankings among other causes of death is important in determining their physical and economic role in each state. Knowing what types of injuries cause the majority of deaths and hospitalizations can inform program planning and development efforts. Table 1 shows the top 5 causes of death by age group in the state. Unintentional and intentional injury deaths are highlighted. Table 2 shows the top 5 causes of injury death by age group in the state. Intentional injury deaths are highlighted.

Table 1: Leading Causes and Total 5-Year Incidence of Deaths by Age Group, Washington, 2004-2008

Age Groups						
Rank	<1	1 - 4	5 - 9	10 - 14	15-19	20-24
1	Congenital Anomalies 523	Unintentional Injury 135	Unintentional Injury 71	Unintentional Injury 111	Unintentional Injury 562	Unintentional Injury 858
2	SIDS 283	Congenital Anomalies 46	Malignant Neoplasms 59	Malignant Neoplasms 37	Suicide 204	Suicide 331
3	Short Gestation 221	Homicide 39	Congenital Anomalies 13	Congenital Anomalies 16	Homicide 106	Homicide 168
4	Maternal Pregnancy Comp. 132	Malignant Neoplasms 32	Homicide 10	Suicide 15	Malignant Neoplasms 86	Malignant Neoplasms 114
5	Placenta Cord Membranes 110	Heart Disease 10	Heart Disease ****	Homicide 13	Heart Disease 28	Heart Disease 54

Note. **** = indicates that the cell values range from 1-9 and are suppressed for data confidentiality purposes.

Table 1 Source: [WISQARS Leading Causes of Death Reports, 2004-2008](#).

Table 2. Leading Causes and Total 5-Year Incidence of Injury Deaths by Age Group, Washington, 2004-2008

Age Groups							
Rank	<1	1 - 4		5 - 9	10 - 14	15-19	20-24
1	Suffocation 68	Drowning 39	Homicide 39	MV Traffic 24	MV Traffic 53	MV Traffic 362	MV Traffic 491
2	Homicide 33	MV Traffic 35		Drowning 13	Drowning 16	Suicide 204	Suicide 331
3	MV Traffic 11	Undet. Suffocation 11	Pedestrian, other 18	Fire/Burn 11	Suicide 15	Homicide 106	Poisoning 222
4	Drowning ****	Suffocation 13		Homicide 10	Homicide 13	Poisoning 90	Homicide 168
5	Natural/ Environmental ****	Fire/Burn ****		Other transport ****	Suffocation ****	Drowning 42	Drowning 38

Note. All mechanisms of suicide and homicide were combined according to intent. Each listed mechanism is unintentional except those otherwise noted. **** = indicates that the cell values range from 1-10 and are suppressed for data confidentiality purposes.

Table 2 Source: National Center for Health Statistics, Multiple Cause of Death Data, 2004-2008.

Childhood injury is also a leading cause of morbidity. Table 3 provides information from the state's hospital discharge data on the leading causes and incidence of hospital admissions by age group.

Table 3: Leading Causes and Annual Incidence of Hospital-Admitted Injuries by Age Group, Washington Residents, 2009

Age Groups						
Rank	<1	1 - 4	5 - 9	10 - 14	15-19	20-24
1	Unintentional Fall 67	Unintentional Fall 221	Unintentional Fall 194	Unintentional Fall 225	Self-Inflicted 408	Self-Inflicted 374
2	Unintentional Other Specified, NEC 48	Unintentional Poisoning 72	Unintentional MVT 42	Unintentional MVT 79	Unintentional MVT 303	Unintentional MVT 345
3	Assault 41	Unintentional Fire/Burn 70	Unintentional Struck By/Against 39	Self-Inflicted 71	Unintentional Fall 251	Unintentional Fall 255
4	Unintentional Suffocation 16	Unintentional Bites & Stings 42	Unintentional Other Specified, NEC 28	Unintentional Struck By/Against 62	Assault 143	Assault 193
5	Unintentional Fire/Burn 15	Unintentional Other Specified, NEC 39	Unintentional Bites & Stings 26	Unintentional Pedal Cyclist, Other 54	Unintentional Struck By/Against 114	Unintentional Poisoning 143

Note: MVT = Motor Vehicle Traffic. NEC = Not Elsewhere Classifiable. Source: Children's Safety Network Economics and Data Analysis Resource Center (CSN EDARC), at Pacific Institute for Research and Evaluation (PIRE), Calverton, MD, January 2012. Incidence based on 2009 data from the state and obtained from the Washington State Inpatient Databases (SID), Healthcare Cost and Utilization Project (HCUP), Agency for Healthcare Research and Quality (AHRQ). These injuries exclude patients who were dead at the time of discharge, readmission cases, transfers (e.g., from another short or long-term care facility, different acute care hospital), medical misadventures, and/or who suffered non-acute injuries. All counts were based on the patients' state of residence.

National Performance Measures

The Federal Maternal and Child Health Bureau Block Grant program requires State MCH programs to report on 18 National Performance Measures (NPM), two of which directly address injuries. NPM #10 addresses the rate of deaths to children aged 14 years and younger caused by motor vehicle crashes per 100,000 children. NPM #16 addresses the rate of suicide deaths among youths aged 15-19.

The following figures provide information related to NPMs #10 and #16.

NPM 10: Reducing Unintentional Motor Vehicle Deaths to Children Ages 0-14:

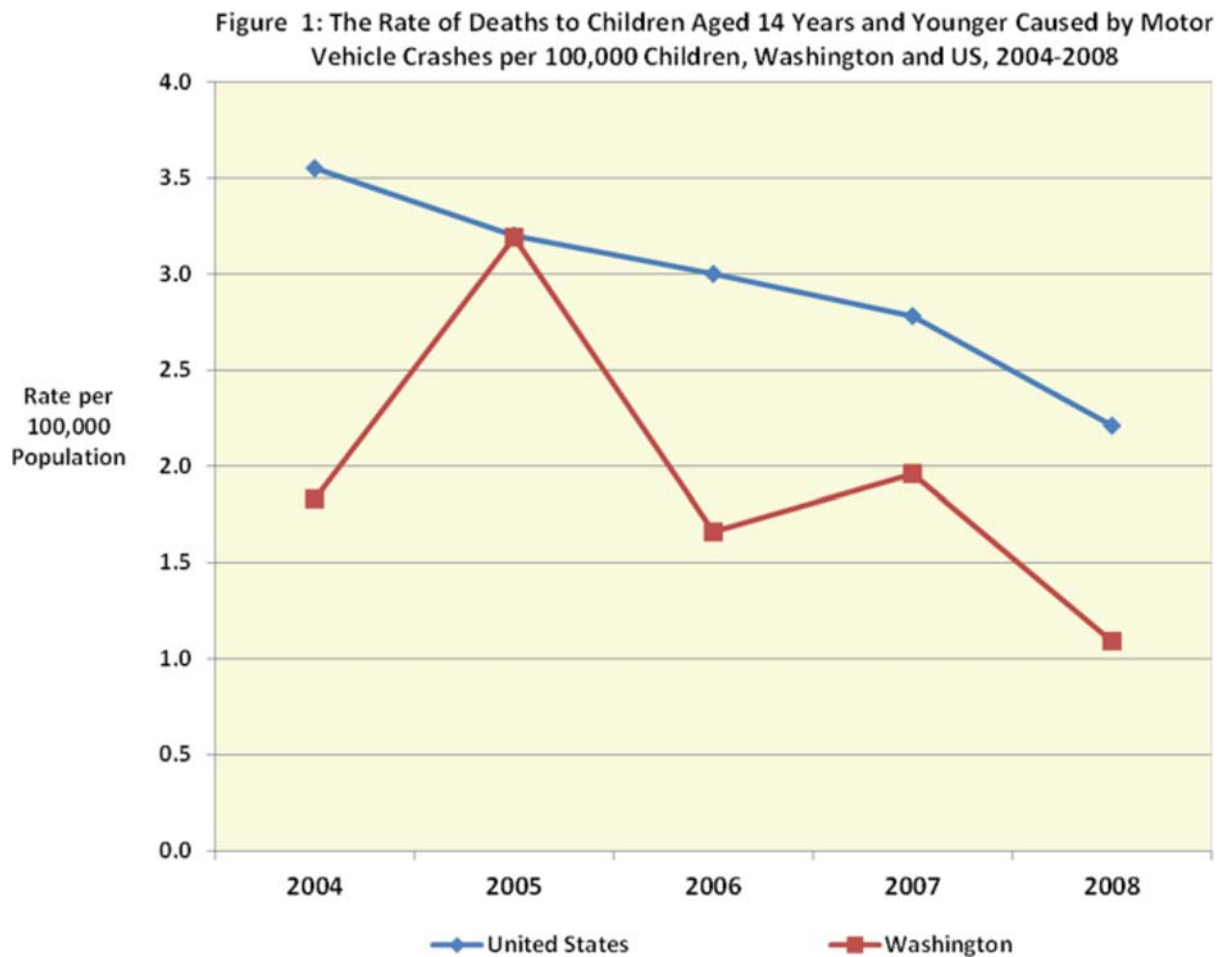
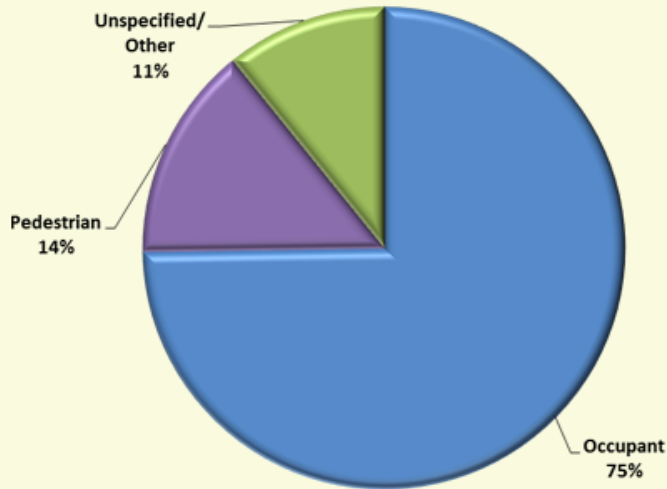


Figure 1 Source: [WISQARS Fatal Injury Reports, 2004-2008](#) and [WISQARS Injury Mortality Reports, 2003-2007](#)



Figure 2: Percentage Distribution of Motor Vehicle Traffic Fatalities by Type among Children Aged 0-14 for Washington, 2004-2008

75% of children ages 0-14 involved in a motor vehicle fatality were occupants.



Note: Unspecified/Other primarily includes cases where a child fatality was coded as an unspecified motor-vehicle accident or a collision between specified motor vehicles, among others. In addition, motorcyclist and pedal cyclist fatalities were collapsed into this category because incidence were fewer than 10 and data were from years 2004-2008.

Figure 2 Source: [WISQARS Fatal Injury Reports, 2004-2008](#) and [WISQARS Injury Mortality Reports, 2003-2007](#)

Figure 3: Motor Vehicle Traffic Fatality Rates by Race among Children and Youths Aged 0-24 for Washington, 2003-2007

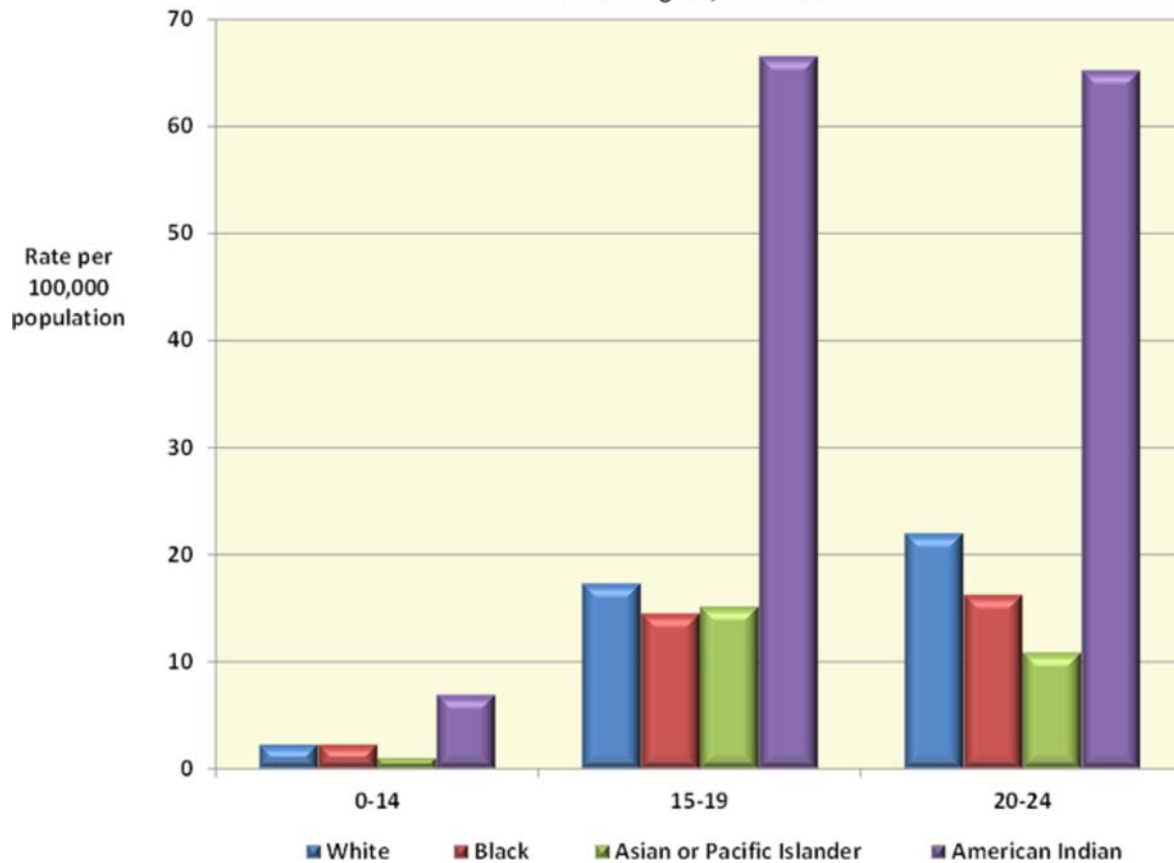
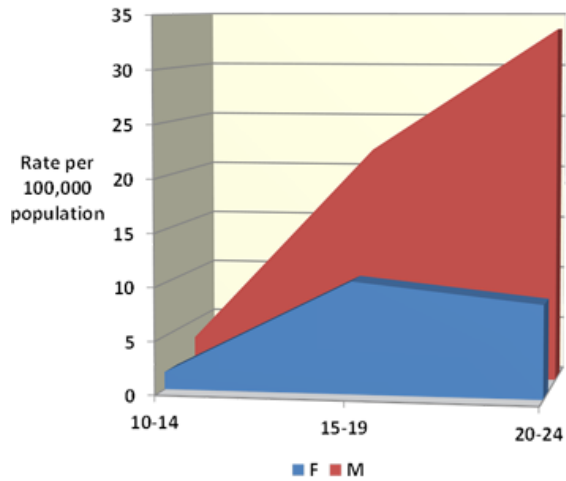


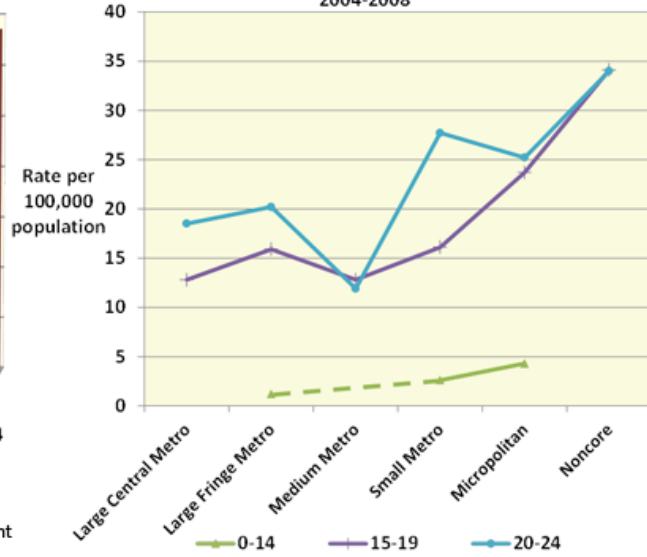
Figure 3 Source: [WISQARS Injury Mortality Reports, 2003-2007](#)

Figure 4: Motor Vehicle Traffic Fatality Rates by Gender among Children and Youths Aged 10-24 for Washington, 2004-2008



In the state of Washington from 2004 to 2008, the rate of motor vehicle crash involved fatalities for males age 15-19 was 109 percent higher than for females age 15-19.

Figure 5: Motor Vehicle Traffic Fatality Rates by Urbanicity among Children and Youths Aged 0-24 for Washington, 2004-2008



Data are only reported for urban areas that exist within the state. In addition, data for some age groups and areas are not reported due to few or no deaths, as indicated by a dotted line.

Figure 4 Source: [WISQARS Fatal Injury Reports, 2004-2008](#) and [WISQARS Injury Mortality Reports, 2003-2007](#)

Figure 5 Source: [CDC WONDER Multiple Cause of Death data, 2003-2007](#) and [Urban-Rural Definition Classification System](#)

NPM 16: Reducing Suicide Deaths Among Teens Ages 15-19:

Figure 6: The Rate (per 100,000) of Suicide Deaths among Youths Aged 15 to 19, Washington and US, 2004-2008

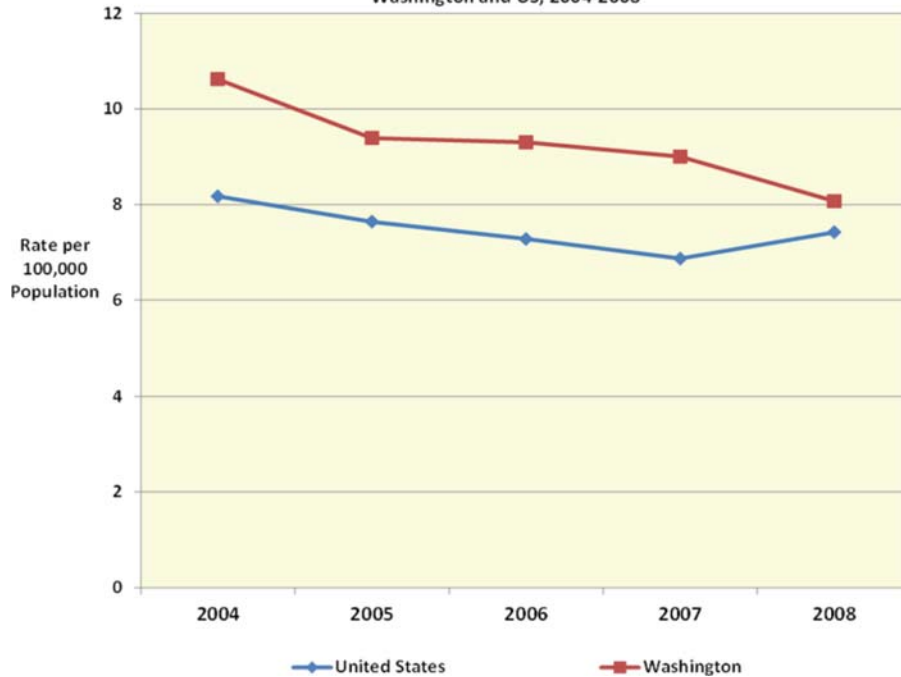
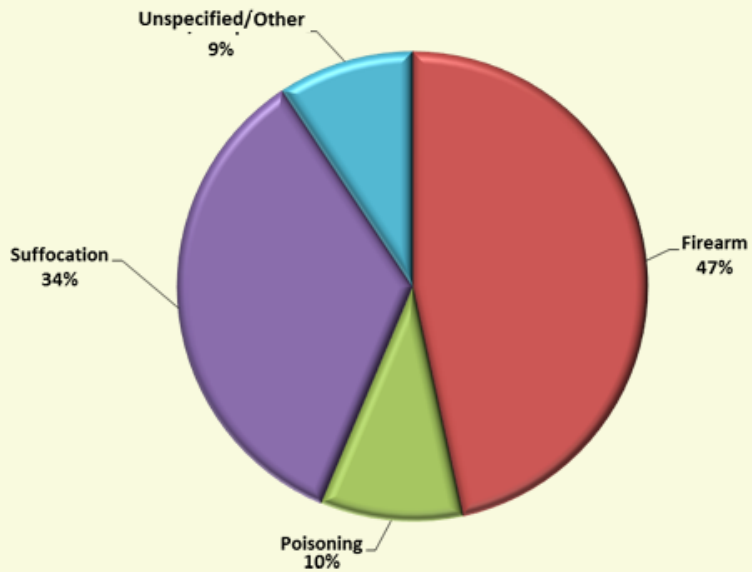


Figure 6 Source: [WISQARS Fatal Injury Reports, 2004-2008](#) and [WISQARS Injury Mortality Reports, 2003-2007](#)

Figure 7: Percentage Distribution of Completed Suicides by Means among Youths Aged 15 to 19, Washington, 2004-2008

47% of youth ages 15-19 completed suicide by using a firearm.



Note: Unspecified/Other includes all self-inflicted fatal injuries in which the mechanism was not identified or the coded mechanism was other than those named in the pie chart.

Figure 7 Source: [WISQARS Fatal Injury Reports, 2004-2008](#) and [WISQARS Injury Mortality Reports, 2003-2007](#)

Figures 8 & 9: Washington does not have YRBS data.

Figure 10: The Rate (per 100,000) of Completed Suicides By Race among Youths Aged 15-24, Washington, 2003-2007

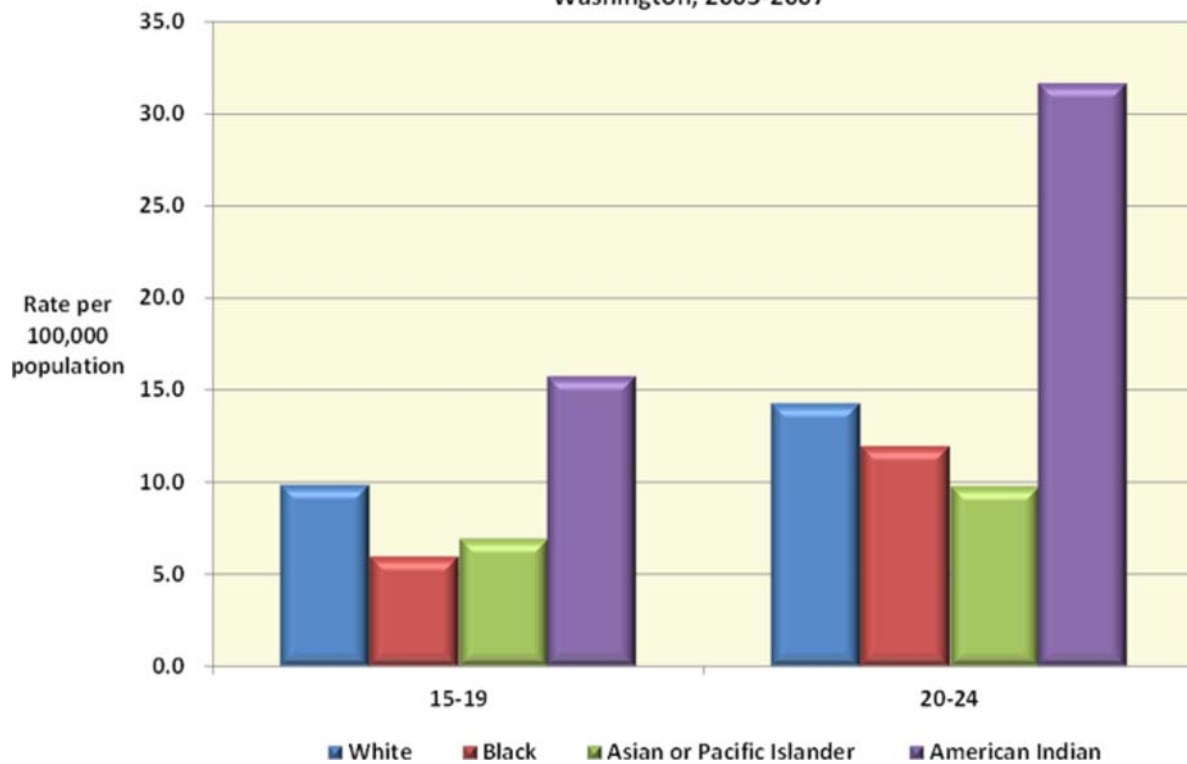
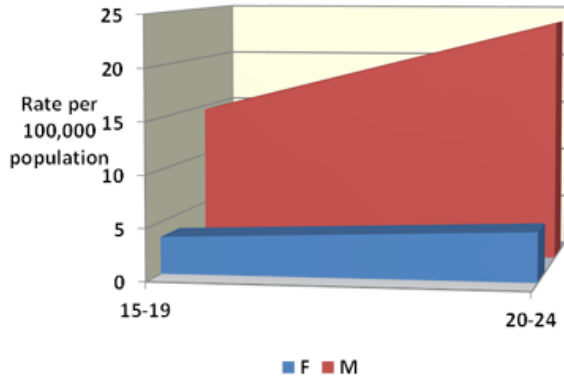


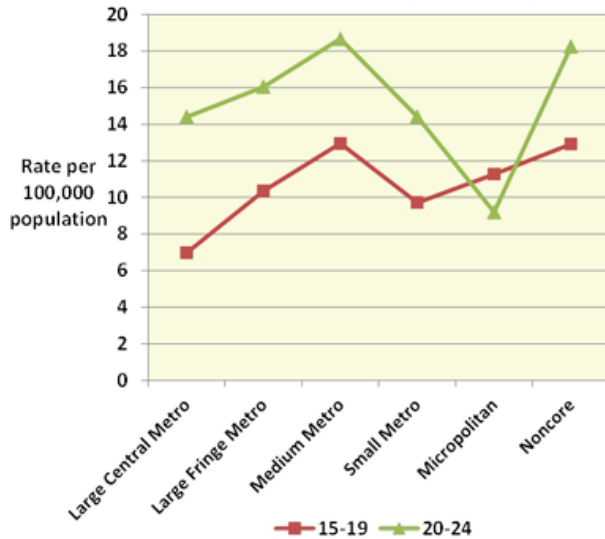
Figure 10 Source: [WISQARS Injury Mortality Reports, 2003-2007](#)

Figure 11: The Rate (per 100,000) of Completed Suicides by Gender among Youths Aged 15-24, Washington, 2004-2008



In the state of Washington from 2004 to 2008, the rate of suicide deaths for males age 15-19 is 3.2 times higher than for females age 15-19.

Figure 12: The Rate (per 100,000) of Completed Suicides by Urbanicity Among Youths Aged 15-24, Washington, 2003-2007



Data are only reported for urban areas that exist within the state. In addition, data for some age groups and areas are not reported due to few or no deaths.

Figure 11 Source: [WISQARS Fatal Injury Reports, 2004-2008](#) and [WISQARS Injury Mortality Reports, 2003-2007](#)

Figure 12 Source: [CDC WONDER Multiple Cause of Death data, 2003-2007](#) and [Urban-Rural Definition Classification System](#)

IVP Health Status Indicators

The Maternal and Child Health Bureau requires every state to report on 12 Health Status Indicators. Six of the indicators are related to IVP. The two figures below reflect the data reported for the IVP Health Status Indicators by the state in their Maternal and Child Health Block Grant Application Form 17, 2011.

Figure 13: Nonfatal Injury Health Status Indicators, Washington 2005-2010

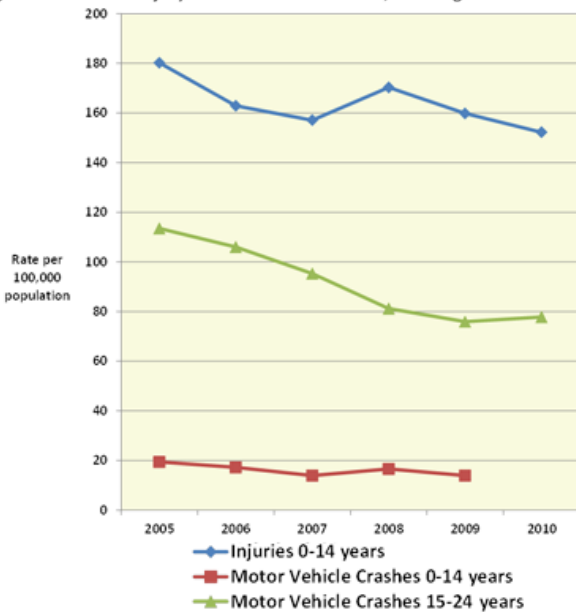
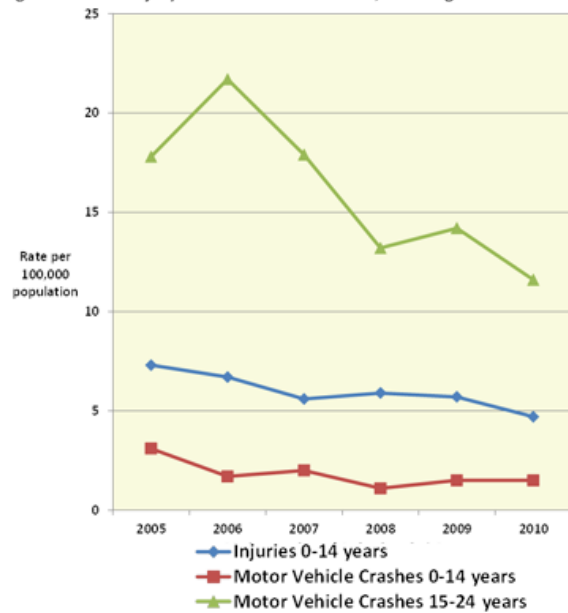


Figure 14: Fatal Injury Health Status Indicators, Washington 2005-2010



Figures 13 & 14 Source: [HRSA, Title V Information System Multi-Year Report](#)

State Specific Performance Measures and Priority Needs

Each state develops up to 7 – 10 State Performance Measures and priority needs. The following provides information about the states' selected 2012 injury-related performance measures and priority needs.

State Performance Measures:

Washington has the following injury-related State Performance Measure:

- To decrease the percent of households with children (0-18 years) in which the reporting adult has an Adverse Childhood Experience (ACE) score of 3 or more.

Priority Needs:

Washington has the following injury-related priority needs:

- Safe and healthy communities.
- Optimal mental health and healthy relationships.

This fact sheet presents a cursory review of the injury morbidity and mortality data available for the state. The figures and tables in this fact sheet can help you understand the state's progress in addressing motor vehicle traffic injuries and suicide. To target and address these and other injury issues, it is critical to understand this data. CSN can assist you in conducting detailed data analyses, utilizing surveillance systems, and undertaking needs assessments. For assistance, contact the Children's Safety Network at csninfo@edc.org.

State Contact Information

MCH Director: Riley Peters, riley.peters@doh.wa.gov

IVP Director: Dolly Fernandes, dolly.fernandes@doh.wa.gov

PRAMS Coordinator: Linda Lohdefinck, linda.lohdefinck@doh.wa.gov

EMSC Contact: Scott Hogan, scott.hogan@doh.wa.gov

CDR Coordinator: Tory Clarke Henderson, tory.henderson@doh.wa.gov

Connect with the Children's Safety Network

43 Foundry Avenue Waltham, MA 02453-8313

CSN's website: <http://www.ChildrensSafetyNetwork.org>

CSN on Facebook: <http://www.facebook.com/childrenssafetynetwork>

CSN on Twitter: <http://www.twitter.com/childrenssafety>

Register for the CSN newsletter: <http://go.edc.org/csn-newsletter>

Need TA? Have Questions? E-mail: csninfo@edc.org

CSN is funded by the Health Resources and Services Administration's Maternal and Child Health Bureau (U.S. Department of Health and Human Services). A project of the Education Development Center, Inc.

January 2012