



Preventing Child Abuse and Neglect to Create a World Where Every Child Can Thrive

May 25th, 2016

Tech Tips



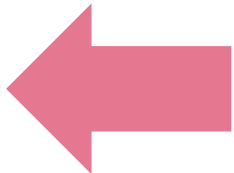
Audio is broadcast through computer speakers

Download resources from File Share pod



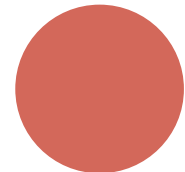
If you experience audio issues, dial (866) 835-7973 and mute computer speakers

You are muted



Use the Q & A to ask questions at any time

This session is being recorded



Presenters

Sandra Alexander, MEd



Joanne Klevens, MD, PhD



Essentials for Childhood

MAKING PREVENTION URGENT



Sandra Alexander, MEd
Joanne Klevens, MD, PhD

Division of Violence Prevention
National Center for Injury Prevention and Control
Centers for Disease Control and Prevention

The findings and conclusions in this presentation are those of the author(s) and do not necessarily represent the official position of the Centers for Disease Control and Prevention



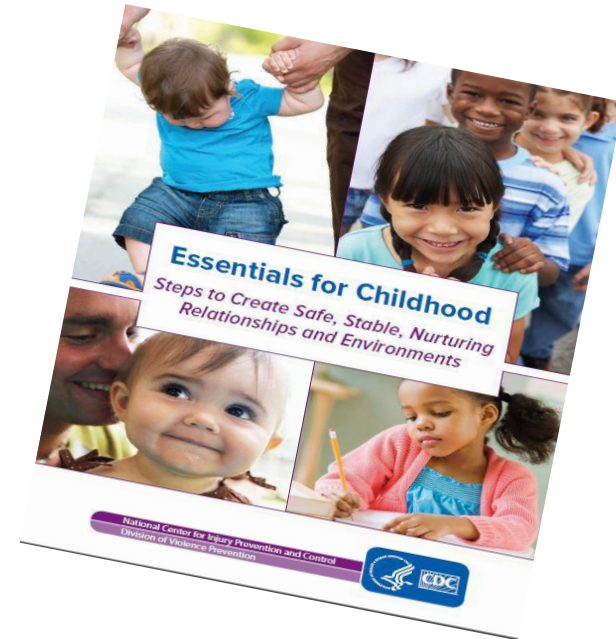
Assuring safe, stable, nurturing relationships and environments for all children



Vision and Unifying Framework for CDC Division of Violence Prevention's
Child Maltreatment Prevention Work



- Safe, stable, nurturing relationships and environments are essential to prevent child abuse and neglect and assure children reach their full potential
- CDC's Essentials for Childhood Framework goal areas:
 - Raise Awareness and Commitment to Support Safe, Stable, Nurturing Relationships and Environments
 - Use Data to Inform Action
 - Create the Context for Healthy Children and Families through Norms Change and Programs
 - Create the Context for Healthy Children and Families through Policies



<http://www.cdc.gov/violenceprevention/childmaltreatment/essentials.html>



ESSENTIALS FUNDING INITIATIVE: STATE IMPLEMENTATION

- **CDC Funding 5 State Health Departments**
 - California
 - Colorado
 - Massachusetts
 - North Carolina
 - Washington

- **31 Self Supported States - participating in initiative in some way**
 - Training/technical assistance and meetings also available to self supported states

Assure Safe, Stable, Nurturing Relationships and Environments through:

- ❑ **Work in all four goal areas**
- ❑ **Focus on creating CONTEXT that supports safe, stable, nurturing relationships and environments**
- ❑ **Focus on health equity as part of this work: Explore relationships between social and economic contexts that place some children more at risk and lead to inequitable health outcomes**
- ❑ **Partnerships with:**
 - State health department
 - Core injury program
 - CBCAP lead agency
 - One or more of national prevention organizations (Prevent Child Abuse America, Children's Trust Fund, or Parents Anonymous)
 - **Business**
 - **Other non-traditional partners like media**
- ❑ **Use Collective Impact Process to help achieve the vision of what we want: safe, stable, nurturing relationships and environments for all children**

Achieving Large-Scale Change through Collective Impact Involves Five Key Elements

Common Agenda

- **Common understanding** of the problem
- **Shared vision** for change

Shared Measurement

- **Collecting data** and **measuring results**
- Focus on **performance management**
- **Shared accountability**

Mutually Reinforcing Activities

- **Differentiated approaches**
- Willingness to **adapt individual activities**
- **Coordination** through **joint plan of action**

Continuous Communication

- **Consistent** and **open communication**
- Focus on **building trust**

Backbone Support

- Separate organization(s) with **staff**
- Resources and skills to **convene** and **coordinate** participating organizations



State Work to Date

Landscape Assessment

Steering Committee

Developing Common Vision and Common Agenda

Workgroups

Common Metrics

State Successes - Examples

- Brought numerous state efforts and many of the “big players” together (i.e., CBCAP, MIECHV, LAUNCH, ECCS, Infant mortality COLIN, PCAA, Children’s Trust, Foundations, etc.) and getting all to agree on a shared agenda
- Getting others to use “safe, stable, nurturing relationships and environments” in their messaging
- Educating partners about EfC policies, priorities and strategies, resulting in partner efforts to advance EfC strategies and increased funding
- Created workgroups to figure out how to implement the shared agenda
- Reaching out to business as a prevention partner
- Disseminating the Raising of America to raise awareness and commitment

Common Agenda

Washington State Essentials for Childhood

March 2015

Vision

All children in Washington State thrive in safe, stable, and nurturing relationships and environments

Commitment

To promote safe, stable, and nurturing relationships in families, communities, and early learning and school environments. By 2025 this leads to measurable and significant improvements in children's health, development and education outcomes and eliminating equity gaps. Our initial work focuses primarily on our state's youngest and most vulnerable children and their families.

Shared Measures

- Kindergarten readiness
- Attachment to parents
- Social/emotional support
- Domestic/family violence
- Community capacity
- Universal dev. screening
- ACEs prevalence
- Caregiver/child relationship
- Homelessness/housing stability
- Parental substance abuse
- School suspensions
- Abuse/neglect

Cross Cutting Strategies for Change

- Educate and motivate key stakeholders on brain science, ACEs, and resilience
- Support community ownership, impact, and action
- Spark innovative policy and financing solutions
- Transform systems and services to prevent and mitigate the impact of trauma
- Align systems to enable family-centered service provision
- Improve data sharing and use across systems

Principles

Bold, Innovative

Population-Level, Statewide

Addresses Inequities

Cross-Sector

Assets-Based

Evidence-Driven

Prevention Focused

Community Informed

Builds On Existing Work

www.doh.wa.gov/efc

State Workgroups

Washington

- Community & stakeholder education & action
- Systems, Services alignment
- Integrating Data Across Systems
- Innovative policy & financing solutions

North Carolina

- Public awareness
- Data
- Child sexual abuse & trafficking prevention
- Evidence-based programs
- Steering committee and Prevention

Colorado

- Family-friendly workplace
- Child care
- Pre-K & full day K
- Social-emotional health

California

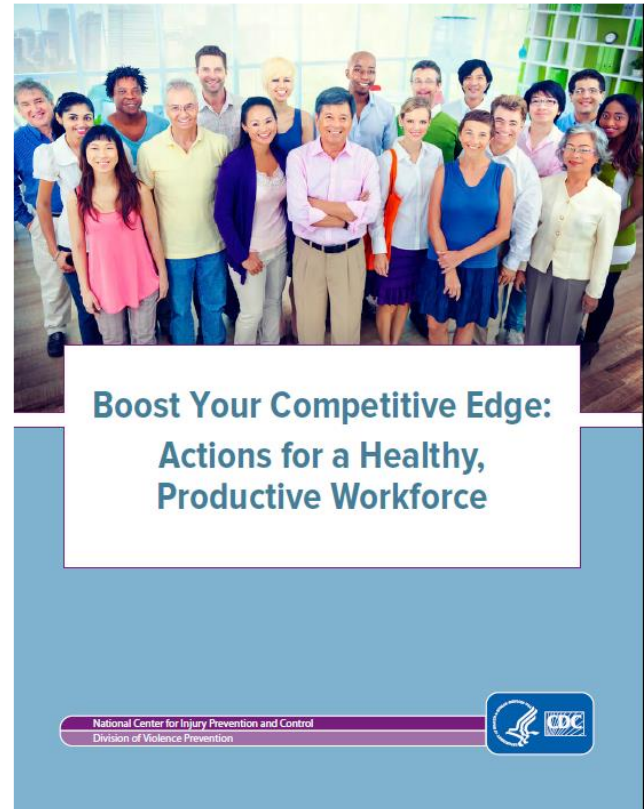
- Programs and Systems Integration
- Community Engagement and Public Awareness
- Public and Private Sector Policy
- Shared Data and Outcomes

Massachusetts

- Awareness & communications
- Data
- Norms change
- Policy change

CDC Resource for Employers

- Model safe, stable, nurturing relationships and environments in your organization
- Create a family-friendly workplace
- Take a comprehensive approach to employee wellness
- Provide parenting resources for employees
- Consider the role of state and local policy in improving employees' and their children's access to safe, stable, nurturing relationships and environments

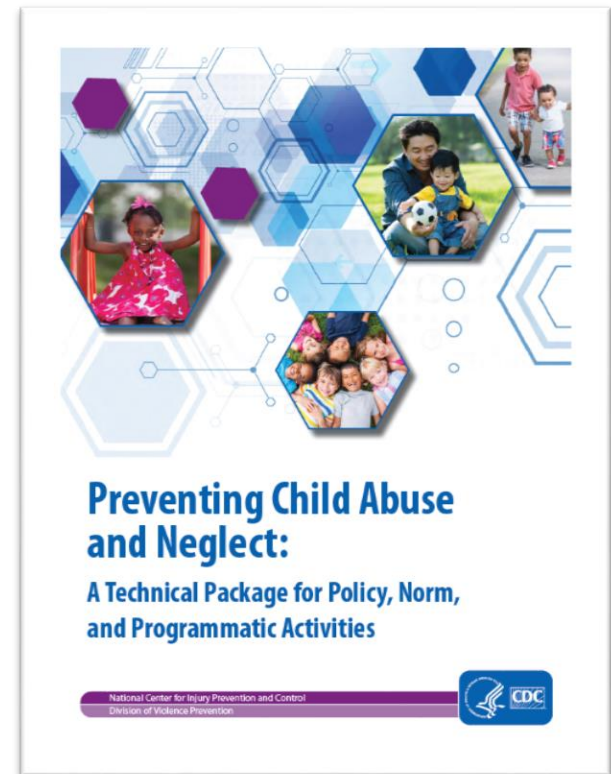


http://www.cdc.gov/violenceprevention/pdf/essentials_sup_3_employer-role.pdf

Provides Opportunities for Action for Small and Large Business

Child Abuse and Neglect Technical Package

- A Technical Package has three components:
 - **Strategies** – direction or actions to achieve the goal of preventing violence
 - **Approaches** – specific ways to advance the strategy
 - **Evidence** – quality of data for each of the approaches in preventing violence or its associated risk factors



<http://www.cdc.gov/violenceprevention/pdf/can-prevention-technical-package.pdf>

Select group of strategies with a focus on PREVENTING child abuse & neglect from happening in the first place as well as approaches to LESSEN the immediate and long-term harms of child abuse & neglect.

Strategy

Approach

Strengthen economic supports to families

- Strengthen household financial security
- Family friendly work policies

Change social norms to support parents and positive parenting

- Public engagement and education campaigns
- Legislative approaches to reduce corporal punishment

Provide quality care and education early in life

- Preschool enrichment with family engagement
- Improved quality of child care through licensing & accreditation

Enhance parenting skills to promote healthy child development

- Early childhood home visitation
- Parenting skill and family relationship approaches

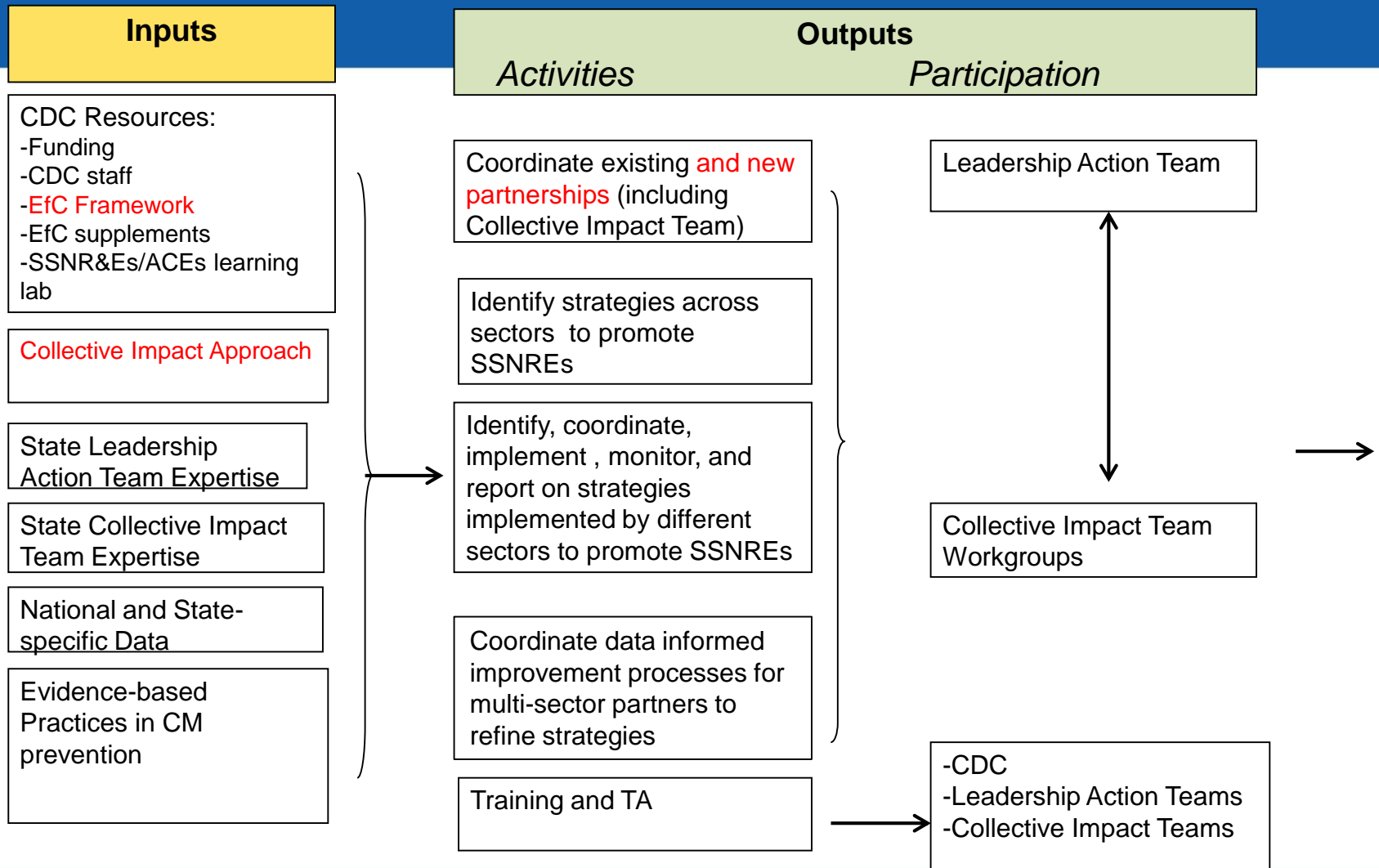
Intervene to lessen harms and prevent future risk

- Enhanced primary care
- Behavioral parent training programs
- Treatment to lessen harms of abuse and neglect exposure
- Treatment to prevent problem behavior and later involvement in violence

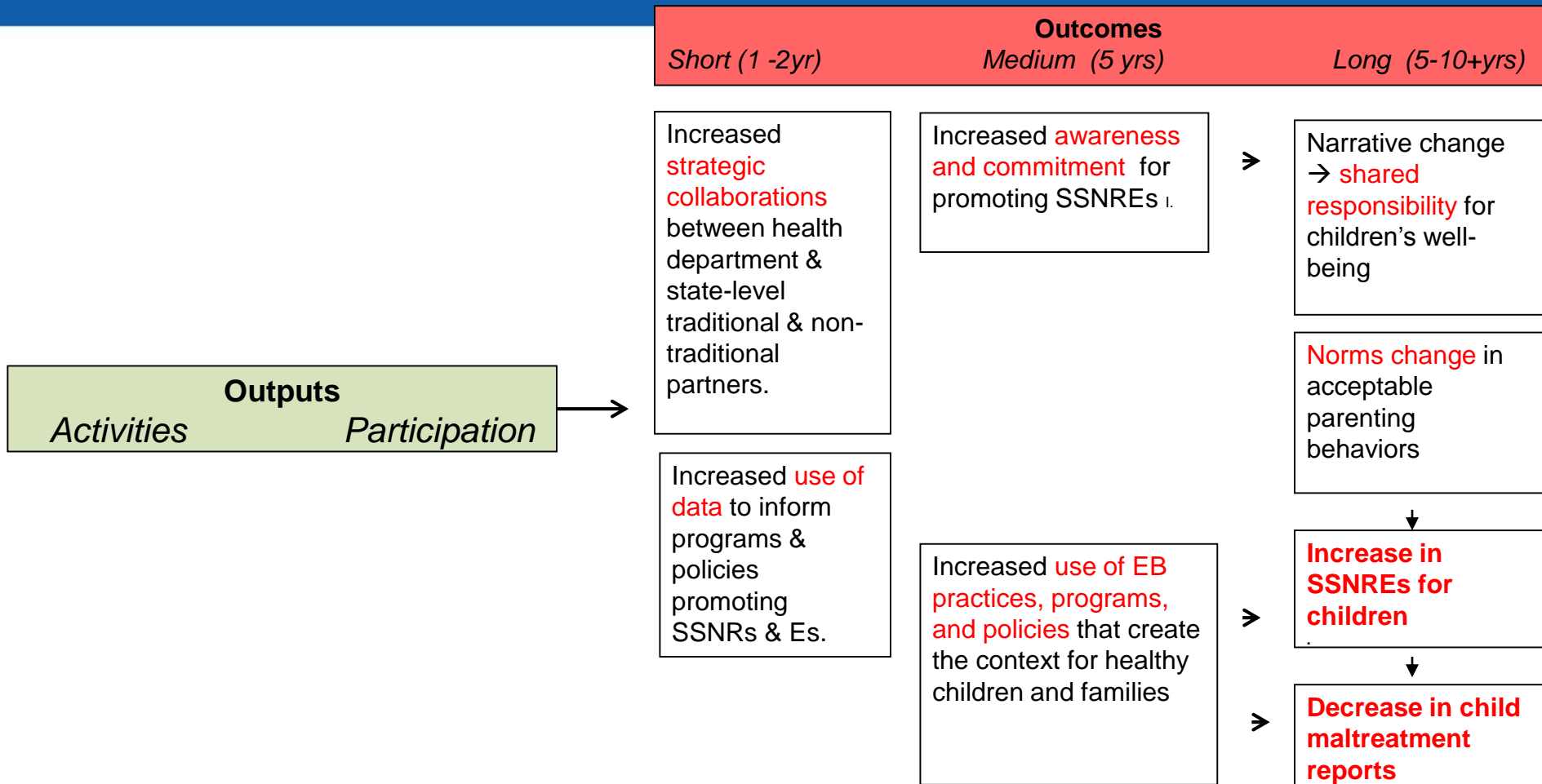


EVALUATION PLAN

Essentials for Childhood Logic Model Pt 1



Essentials for Childhood Logic Model Pt 2



Challenging Evaluation

- ❑ Complexity of the problem and the intervention
- ❑ Many sectors and organizations involved
- ❑ Actions are dependent on the moves or actions of other players
- ❑ High degree of uncertainty about what will work, in what kind of context, and with whom
- ❑ Data and feedback will be needed continuously to decide next steps

Solution: state evaluators learned about developmental evaluation and provide timely feedback to team

Evaluation ~ “Pilot” of the Framework

- ❑ Feasibility?
- ❑ How well is it implemented?
- ❑ Impact?
- ❑ Lessons learned to refine the Essentials framework
 - Right goals or action areas?
 - Collective impact approach?

Evaluation of the “Pilot” of the Framework

- ❑ How and how well is collective impact implemented?
- ❑ What strategies emerge?
- ❑ What circumstances or contextual conditions lead to new strategies, or adaptations, implementation, or rejection of strategies proposed?
- ❑ What strategies and partnerships trigger change in awareness, commitment, programs, norms, or policies?
- ❑ How does the larger system or environment respond to the initiative or strategies?
- ❑ What are the barriers, facilitators, and opportunities encountered, successes observed, and lessons learned?
- ❑ What progress is made in each of the 4 goal areas?

Data Sources

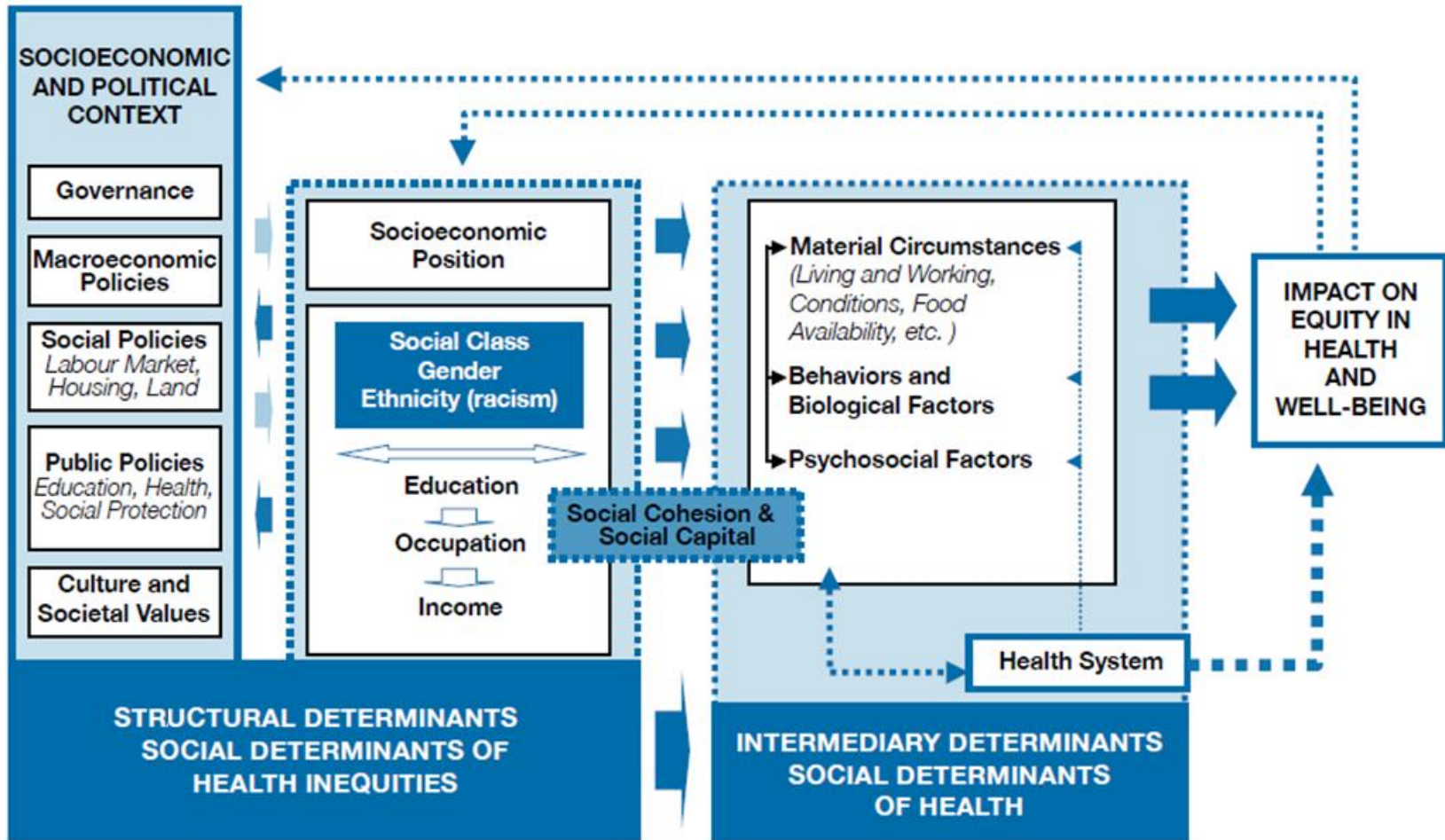
- ❑ Conference call minutes (funded & self-supported)
- ❑ Grantees' yearly reports
- ❑ Baseline landscape assessment (data available, existing efforts (evidence-based?), their reach or coverage)
- ❑ “Institutional commitment” survey administered to grantee and partners at baseline and at the end of the initiative
- ❑ State survey on “public awareness & commitment” and “community norms” at baseline and at the end of the initiative (& compare to national progress)

Long-term outcomes

- ❑ Increase in safe, stable, nurturing relationships and environments
- ❑ Decreases in child abuse & neglect & its inequitable burden on low income families

*using available data & for all 50 states

WHO's Commission on Social Determinants of Health Framework



Commission on Social Determinants of Health. (2010). *A conceptual framework for action on the social determinants of health*. Geneva: World Health Organization.

Essentials for Childhood Indicators of Impact

SOCIOECONOMIC & POLITICAL CONTEXT

State laws supportive of children & families

Macroeconomic policies

- State EITC
- Child Tax Credit

Labor Market Policies

- Living wages
- Family-friendly work

Housing Policies

- Inclusionary zoning

Child care & education

- No wait lists for child care
- Pre-K coverage
- Fair funding

Social Protection Policies

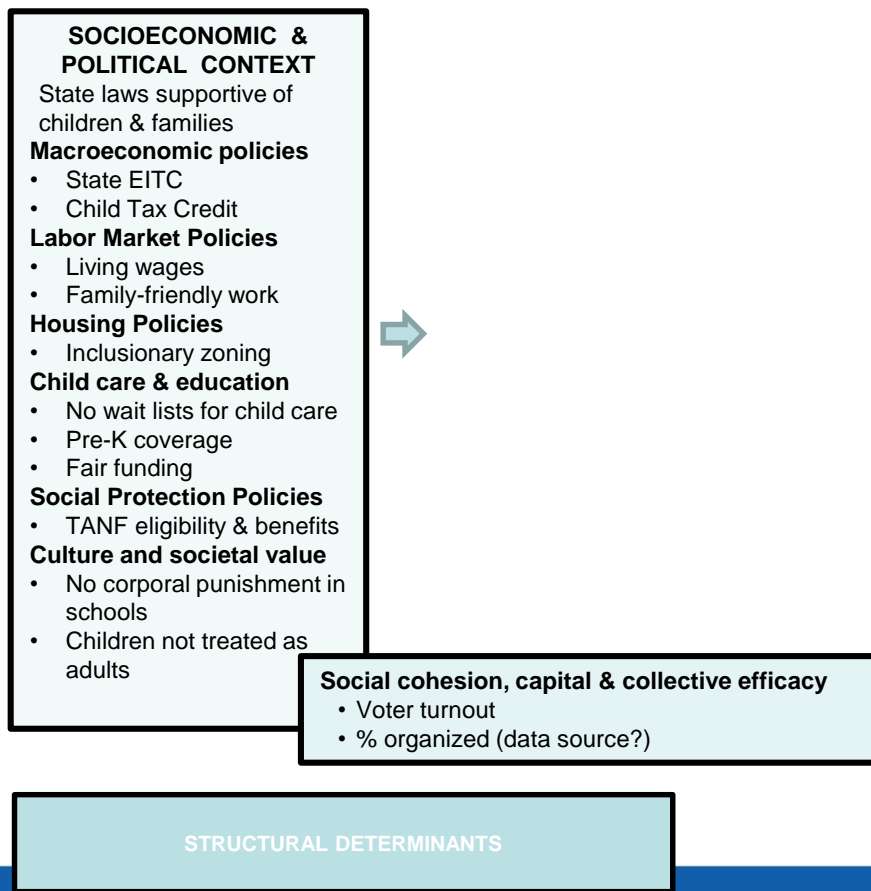
- TANF eligibility & benefits

Culture and societal value

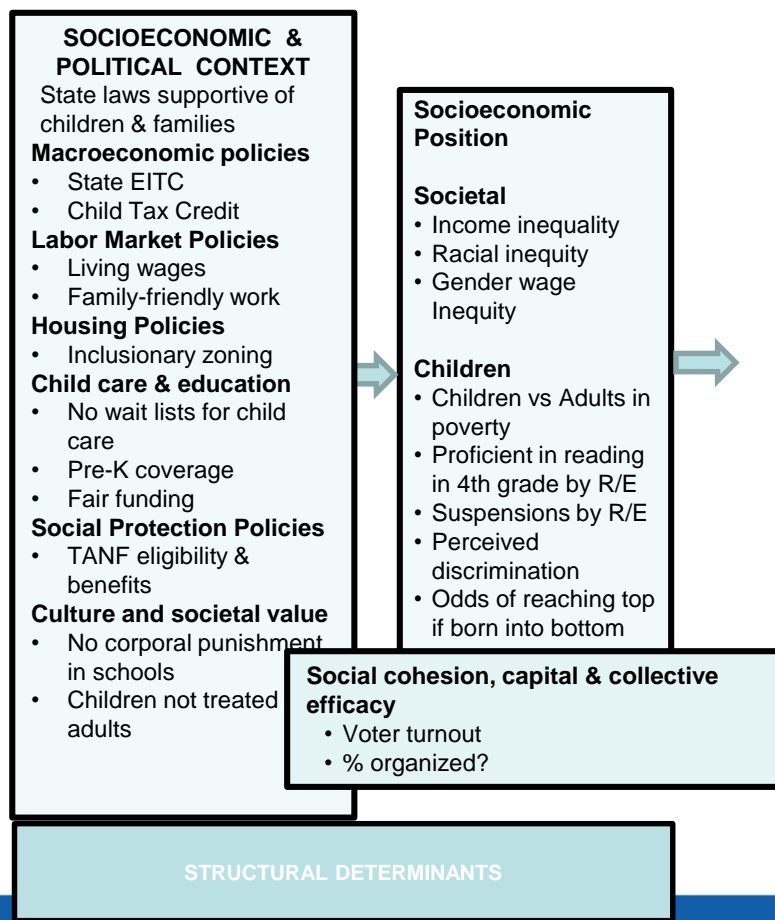
- No corporal punishment in schools
- Children not treated as adults

STRUCTURAL DETERMINANTS

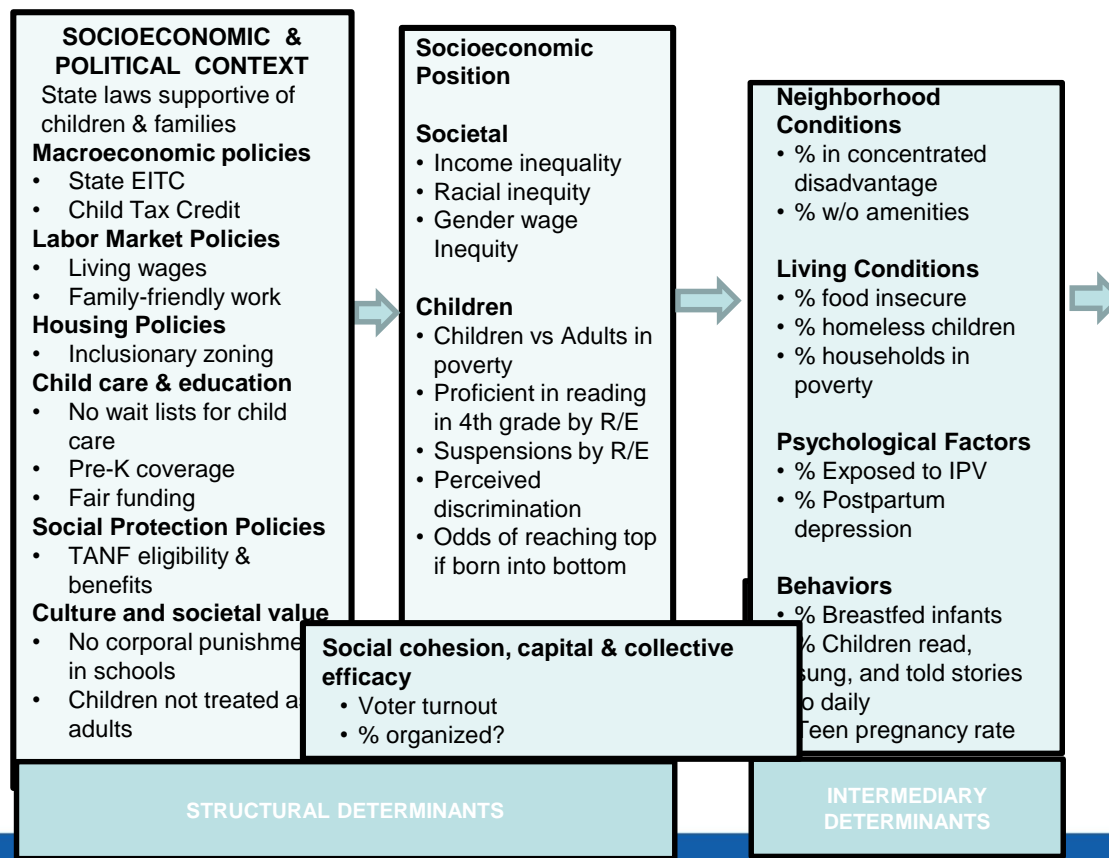
Essentials for Childhood Indicators of Impact



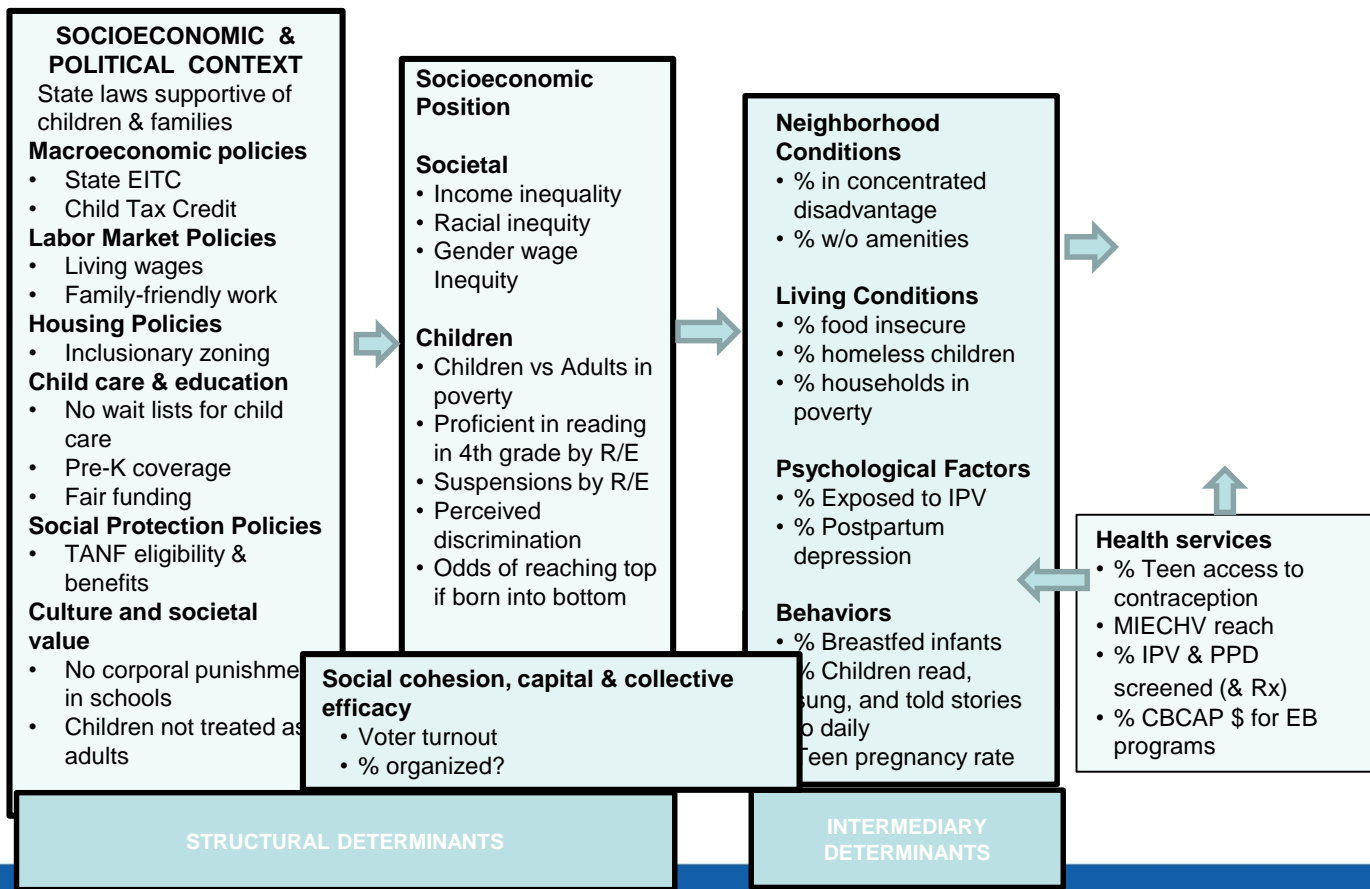
Essentials for Childhood Indicators of Impact



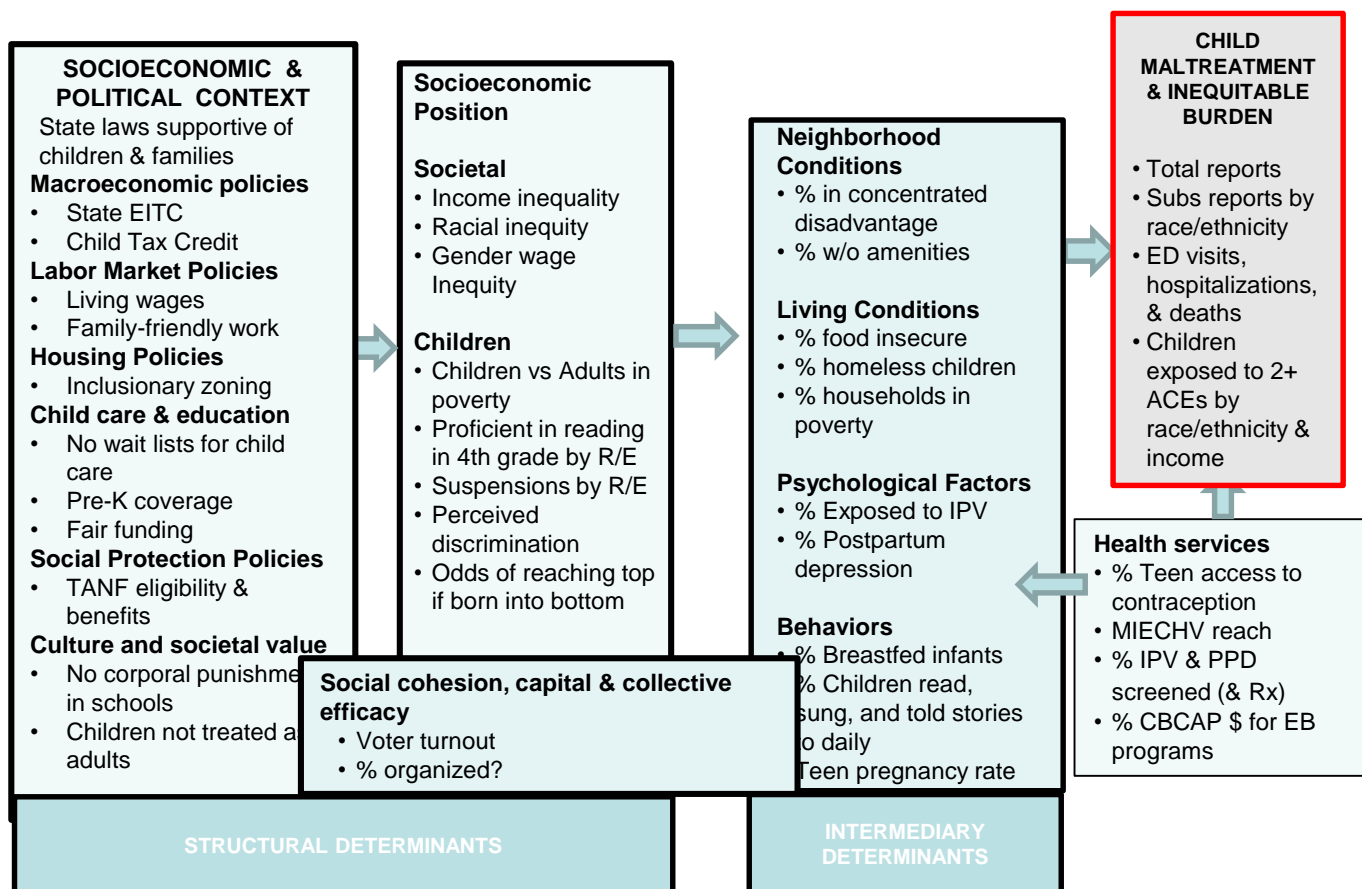
Essentials for Childhood Indicators of Impact



Essentials for Childhood Indicators of Impact



Essentials for Childhood Indicators of Impact



For More Information:

SPAlexander@cdc.gov

www.cdc.gov/ncipc

www.cestudy.org

www.cdc.gov/violenceprevention/childmaltreatment/essentials

<http://www.cdc.gov/violenceprevention/pdf/can-prevention-technical-package.pdf>

http://www.cdc.gov/violenceprevention/pdf/essentials_sup_3_employer-role.pdf

http://vetoviolence.cdc.gov/childmaltreatment/phl/resource_center_infographic.html

Presenter

Leslie Erdelack, MPH



Preventing Child Abuse and Neglect to Create a World Where Every Child Can Thrive

Children's Safety Network Webinar

May 25, 2016

Leslie Erdelack, MPH

Injury Prevention & Behavioral Health



About ASTHO

ASTHO is the national nonprofit organization representing public health agencies in the United States, the U.S. Territories, and the District of Columbia, and over 100,000 public health professionals these agencies employ.

ASTHO members formulate and influence sound public health policy and ensure excellence in state-based public health practice.



Access to
Healthcare Services



Population-Based
Primary Prevention
Services



Immunization
Services



Screening and
Treatment for Diseases
and Conditions



Individual
Clinical
Services



Lab Services



Registry
Maintenance



Maternal and
Child Health
Services



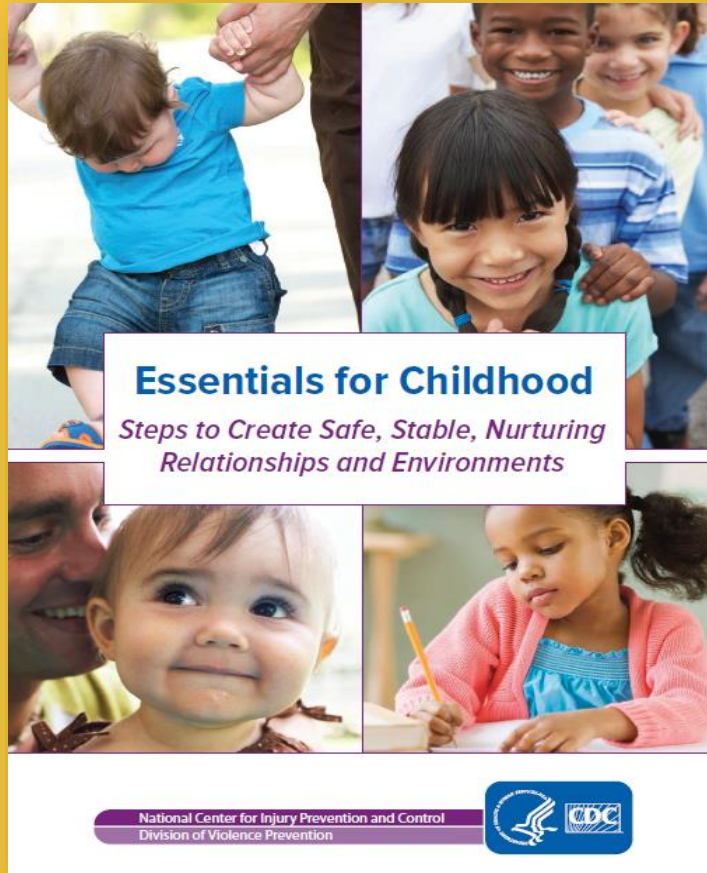
Data Collection,
Epidemiology, and
Surveillance



Regulation,
Inspection,
and Licensing



Environmental
Health Activities



CDC's *Essentials* *for Childhood*

- GOAL 1:** Raise awareness and commitment to promote safe, stable, nurturing relationships and environments and prevent child maltreatment
- GOAL 2:** Use data to inform actions
- GOAL 3:** Create the context for healthy children and families through norms change and programs
- GOAL 4:** Create the context for healthy children and families through policies

A close-up photograph of a child's hands holding several colorful alphabet blocks. The blocks are yellow, green, and red, with white letters and patterns. The child's fingers are visible, holding the blocks. The background is a soft, out-of-focus light color.

ASTHO *Essentials for Childhood* Policy Guide

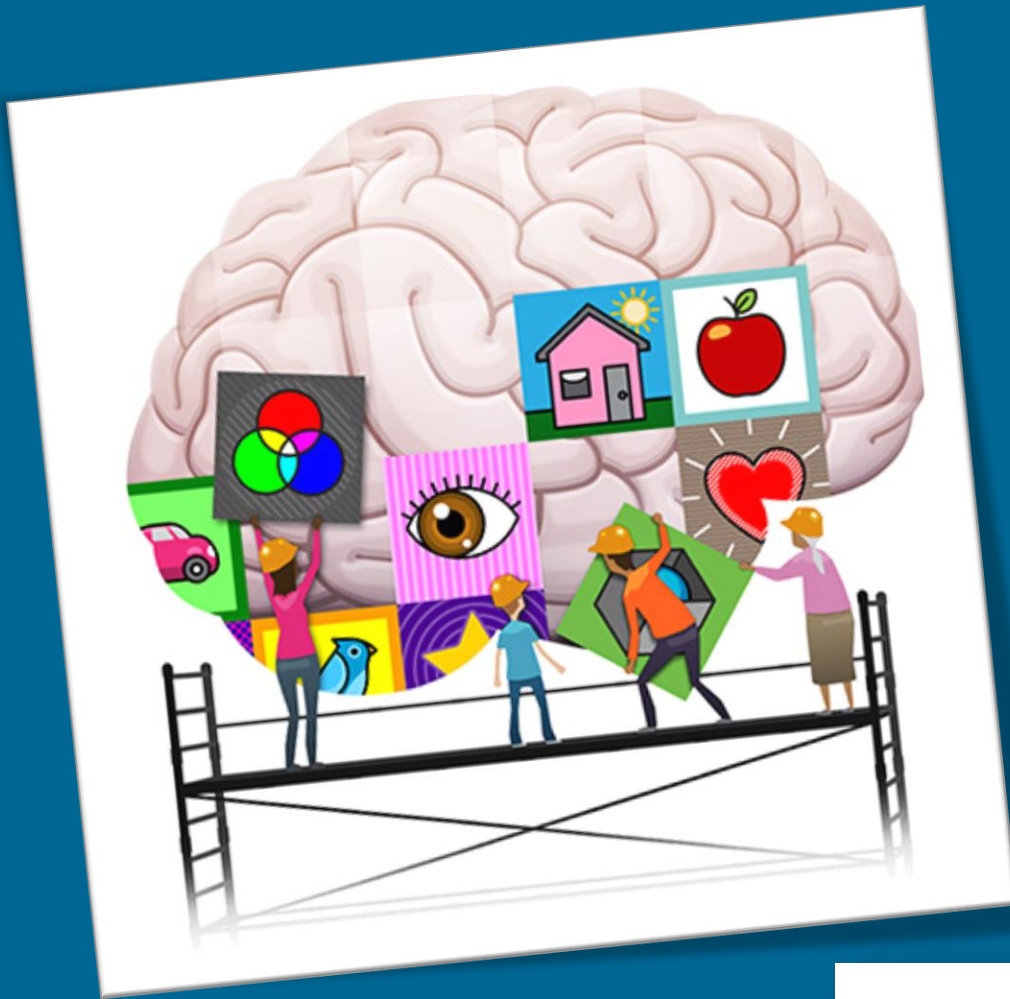
Expected publication date: Summer 2016

Economic and Social Supports to Families

Quality Care and Education Early in Life

Supporting Parents and Positive Parenting

Early Experiences Shape Developing Brain Architecture



Example:

CONNECTICUT'S TWO-GENERATIONAL INITIATIVE

- 2015 provision in the state budget
- Approx. \$2.85 million
- School readiness and workforce development pilot program
- Pilot sites in six regions
- PA 12-5, Section 401: *“foster family economic self-sufficiency in low-income families by delivering academic and job readiness support services across generations, (parent and child or caregiver), concurrently.”*
- Interagency workgroup

Economic and Social Supports to Families

Policies that increase economic self-sufficiency and streamline complicated application processes for public assistance programs may reduce parental stress associated with child abuse and neglect.



- Livable wages
- Child support passed-through
- Temporary Assistance for Needy Families (TANF) benefits
- Earned Income Tax Credits and Child Tax Credits
- WIC or SNAP (state nutrition assistance programs)
- Housing assistance
- Child care access

Quality Care and Education Early in Life

Policies that promote access to affordable child care allow parents to work and support a family. Quality child care also introduces children to nurturing relationships and stimulating learning opportunities.

- Early Head Start
- Pre-K with parental involvement



Example: North Carolina Head Start/Early Head Start & Division of Social Services, Economic and Family Services partner to incentivize coordination between local Head Start programs and social services.

Supporting Parents and Positive Parenting

Policies that provide employees with the flexibility to spend time away from work caring for a child or other family member without the worry of losing their jobs or income encourage stronger family bonds and increased productivity.

- Family-friendly workplaces
- Paid parental leave and paid sick leave



See: Klevens J, et al. Paid family leave's effect on hospital admissions for pediatric abusive head trauma. *Injury Prevention*. 2016.

<http://www.ncbi.nlm.nih.gov/pubmed/26869666>



Closing Thoughts

- “Coordination is more than a referral.”
- Policies can be a foundation for ongoing collaboration and coordination across sectors.



Thank you!

Leslie Erdelack

lerdelack@astho.org

Lynn Chaiken

lchaiken@astho.org



Questions



Please enter your questions in the Q & A box

Thank you!

Please fill out our short evaluation:

<https://www.surveymonkey.com/r/X9Y7KKX>