

Welcome to the STAW!

Please share in chat or unmute:

- Name
- Role
- State
- Topic area

What is one thing that you are hopeful about for 2024?





Children's Safety
Network



Education
Development
Center



January 18, 2024

State Technical Assistance Webinar (STAW)

Working Towards a Health Equity and Anti-Racist Approach to Child Safety



Funding Sponsor



This project is supported by the Health Resources and Services Administration (HRSA) of the U.S. Department of Health and Human Services (HHS) under the Child and Adolescent Injury and Violence Prevention Resource Centers Cooperative Agreement (U49MC28422) for \$5,000,000 with 0 percent financed with non-governmental sources. This information or content and conclusions are those of the author and should not be construed as the official position or policy of, nor should any endorsements be inferred by HRSA, HHS or the U.S. Government.

Presenters



Rebecca Bishop, MSW

Education Development Center



Sadiqa Kendi, MD, MPH, FAAP, CPST

Safe Kids Worldwide



Dawne Gardner, MBA, CPST

Safe Kids Worldwide

A Health Equity & Anti-Racist Approach to Child Safety

Rebecca Bishop, MSW
January 18, 2024



Agenda



1 Explore components of a health equity and anti-racist approach

- Develop shared definitions

2 TIPS to implement an anti-racist approach

- Create Caring, Equitable Community of Engaged Learners
- Teacher Training & Professional Development
- Partnership & Engagement

What is Health Equity?

- Everyone has a fair and just opportunity to be as healthy as possible.
- This includes addressing historical and contemporary injustices, and the elimination of disparities.
- Address the social, economic, and environmental conditions, known as social determinants of health that contribute to health disparities



A diverse group of children are seated on a bus, looking out the windows. The children are of various ethnicities and ages, creating a multicultural scene. The text is overlaid on the top half of the image.

**Are you familiar with a Health
Equity & Anti-Racist Approach?**

Achieving Health Equity

Achieving health equity requires actions to increase opportunities to be healthy. That requires improving access to the **conditions and resources that strongly influence health.**

- Good jobs with fair pay
- High-quality education
- Safe housing
- Healthy physical and social environments
- High-quality health care



What does Anti-Racist mean?

- The active process of identifying and eliminating racism by changing systems, organizational structures, policies and practices and attitudes, so that power is redistributed and shared equitably
- Focuses on racism and its impact on individuals and communities.
- Structural racism as a fundamental driver of health disparities
- Focuses on dismantling racism in all aspects of society that affect health



Components of a Health Equity Anti-Racist Approach



Addressing systemic inequalities including racism by identifying and dismantling systemic barriers that lead to unequal outcomes.



Emphasizes the importance of social determinants of health



Promoting cultural competence and representation



Promote research and data collection that adequately represents racial and ethnic groups. This is crucial for identifying disparities and creating targeted interventions.



Community engagement and empowerment

Thoughts?
Reactions?
Questions?
Challenges?

TIPs to Implement a Health Equity Anti-Racist Approach

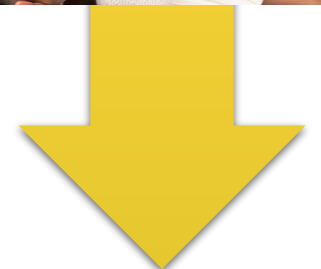
-
- Create Caring, Equitable Community of Engaged Learners
 - Teacher Training & Professional Development
 - Partnership & Engagement



Create Caring, Equitable Community of Engaged Learners

Any Other Ideas?

- ❑ Foster an environment where all children feel valued, respected, and included.
- ❑ Implement cultural education that reflects the rich diversity of cultures, backgrounds, and identities.
- ❑ Ensure classrooms and play areas are welcoming and free from racial stereotypes. Display diverse images, posters, and books.
- ❑ Create an environment where children feel safe expressing their identities and experiences without fear of judgment.



Teacher Training & Professional Development

Other Ideas ?

- ❑ Educators need training to recognize and address their own biases. Workshops, seminars, and ongoing professional development can help.
- ❑ Equip teachers with tools to create inclusive classrooms. This includes understanding privilege, microaggressions, and culturally responsive teaching.
- ❑ Involve children, families, and educators in decision-making and improvement processes.
- ❑ Regularly assess your school/program/organization's practices, policies, and outcomes using a health equity and anti-racist lens.
- ❑ Challenge racism and stand up for everyone's right to be treated with dignity and respect. Demonstrate anti-racist attitudes and behaviors in your own actions.



Partnership & Engagement

- ❑ Collaborate with families to understand their unique needs and cultural backgrounds.
- ❑ Involve families in decision-making and planning. Understand their cultural norms, values, and communication styles.
- ❑ Collaborate with community organizations to provide resources and support students and their families.





**What are you doing
related to a *health
equity and anti-
racist approach?***



Promote a Health Equity Anti-racist Approach!

Rebecca Bishop, MSW
rbishop@edc.org

Questions?





Equity in Child Safety

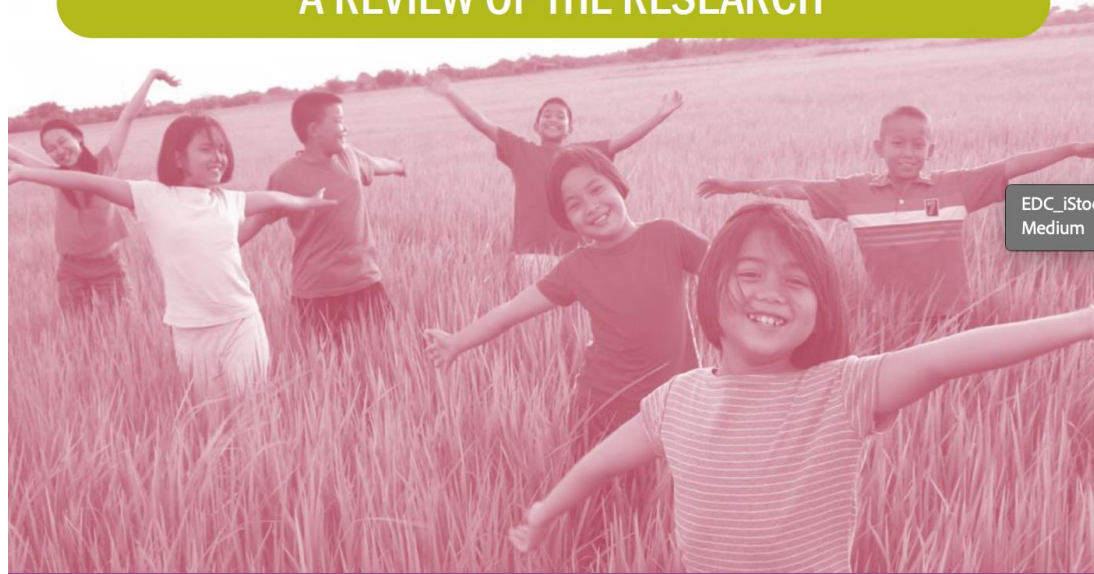
**SAFE
K:DS**
WORLDWIDE®

Sadiqa Kendi, MD, MPH, FAAP, CPST

Dawne Gardner, MBA, CPST



UNDERSTANDING DISPARITIES IN CHILD AND ADOLESCENT INJURY: A REVIEW OF THE RESEARCH



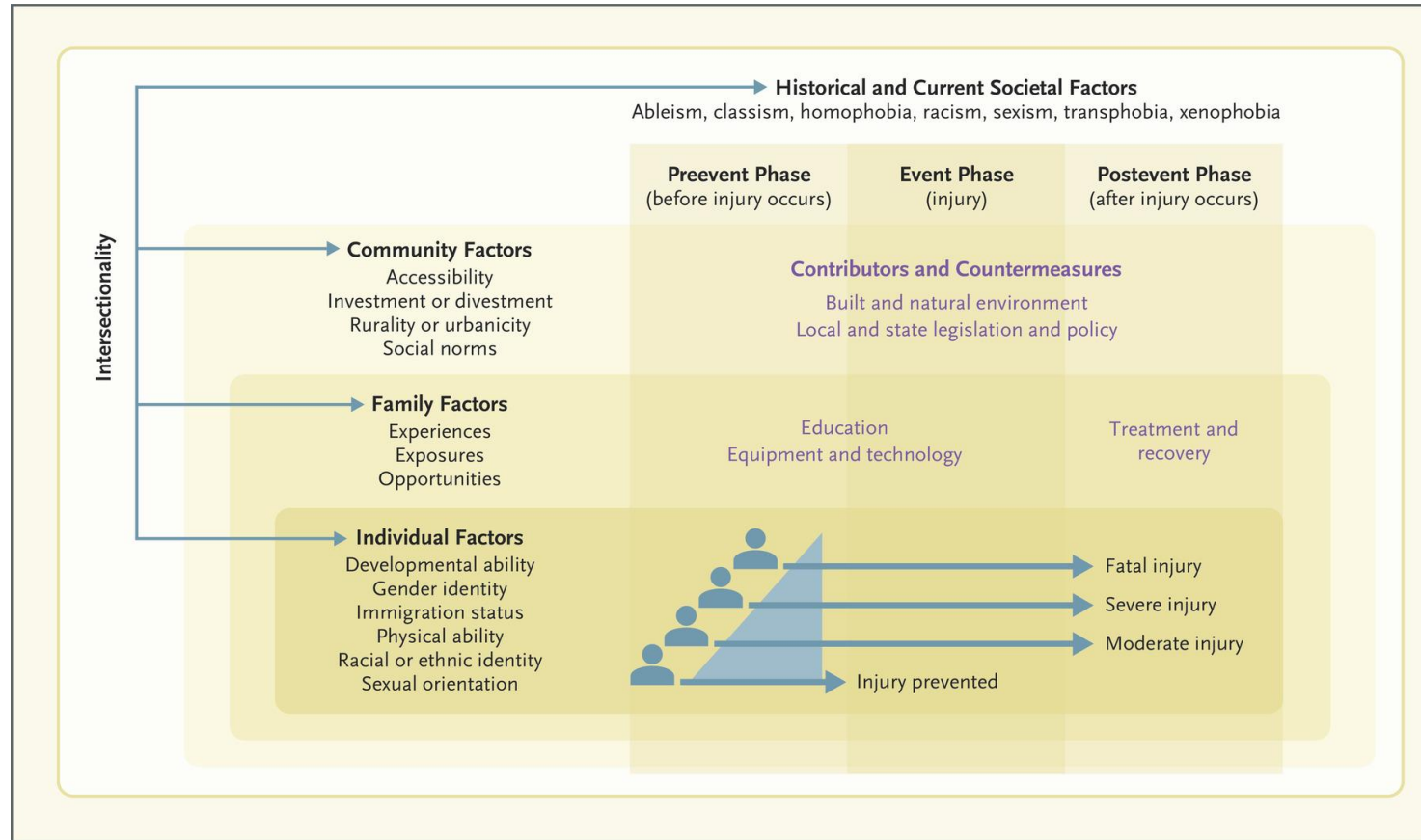
EDC_iStock
Medium

December 2017



The Injury Equity Framework

Sadiqa Kendi, M.D., M.P.H., and Michelle L. Macy, M.D. N ENGL J MED 388;9 NEJM.ORG MARCH 2, 2023



2 children struck, killed by vehicle near Riverdale Elementary School in Prince George's Co.

By Stephanie Ramirez and FOX 5 DC Digital Team | Published November 20, 2023 | Updated November 21, 2023 | News | FOX 5 DC | [↗](#)



The scene of a crash nearby Riverdale Elementary School on Nov. 20. (Courtesy 7 News/SkyTrak7)

Police said a woman in a van was driving south on Taylor Road toward Riverdale Road. She struck the three people when she turned left onto Riverdale Road, police said. She remained at the scene.

"Families are grieving today," Prince George's County Police Chief Malik Aziz said. "Two families, friends are without their children today in a time that we are gearing up to give thanks."

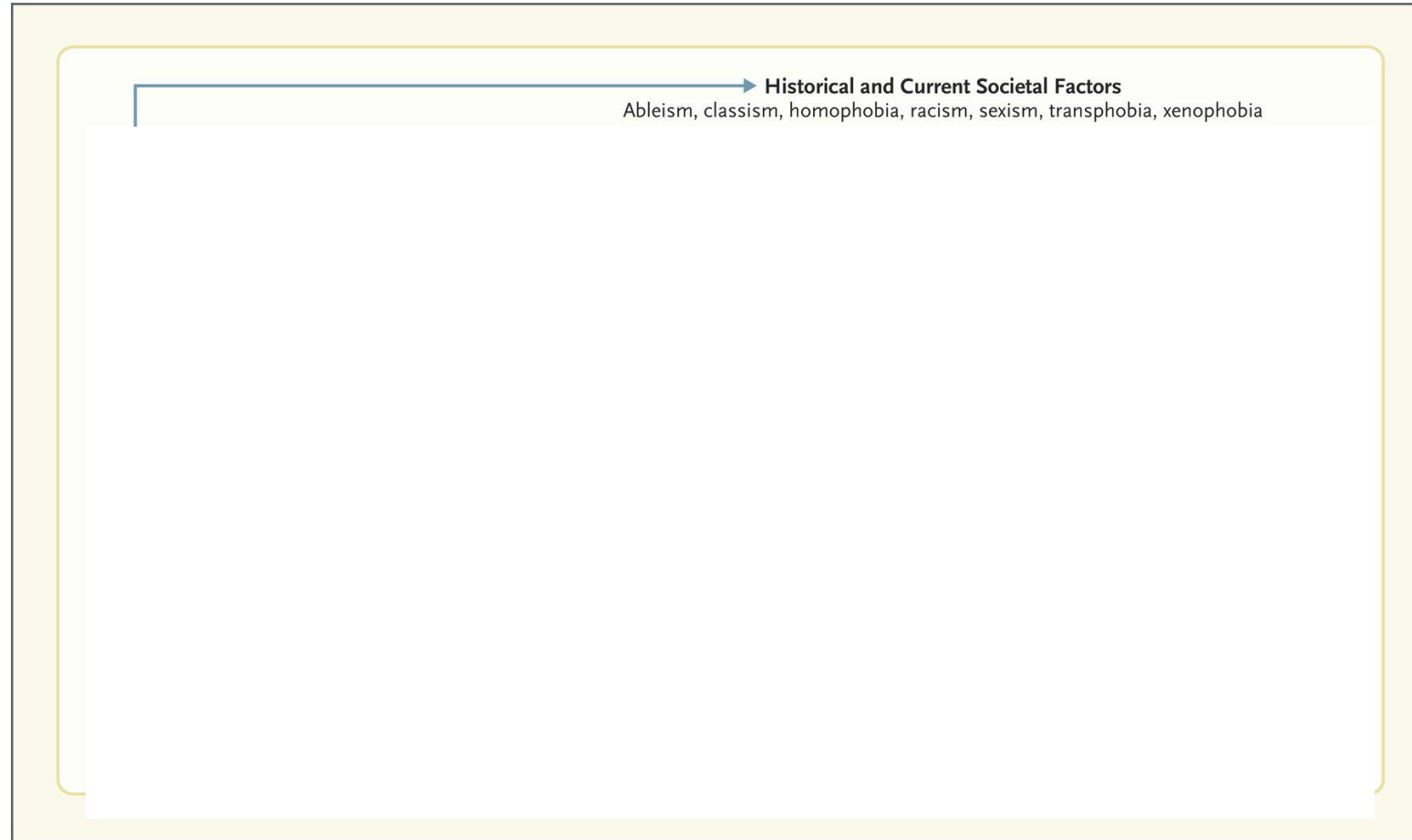
Riverdale Park Mayor Alan Thompson called the incident a tragedy in [a social media post](#), and said Gov. Wes Moore called him to pass along his condolences to the children's families.

On Tuesday morning, Aziz told reporters the location of the crash is one of the locations they have been looking to place a crossing guard. The previous long-time guard who had been at the intersection retired over the summer.



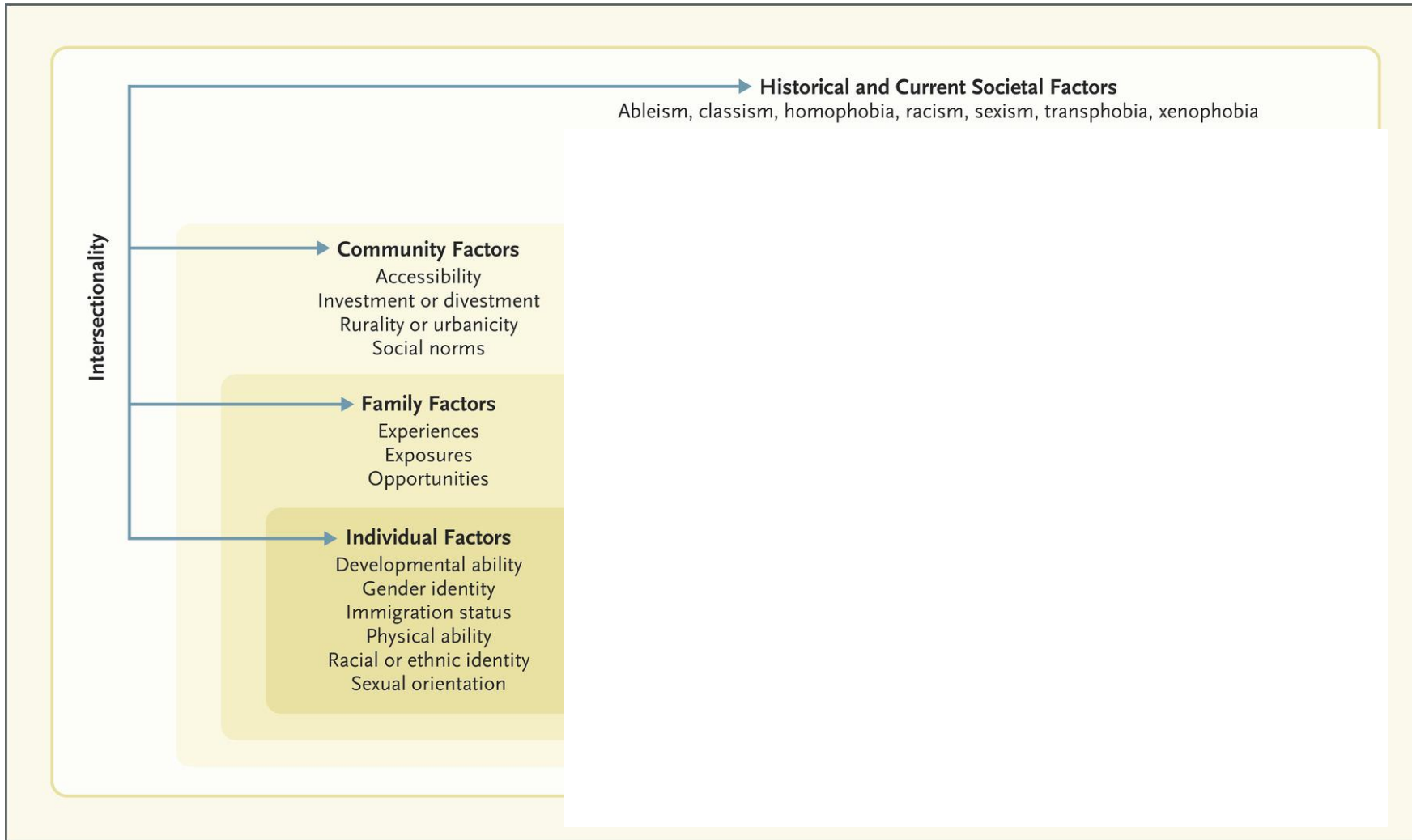
The Injury Equity Framework

Sadiqa Kendi, M.D., M.P.H., and Michelle L. Macy, M.D. N ENGL J MED 388;9 NEJM.ORG MARCH 2, 2023



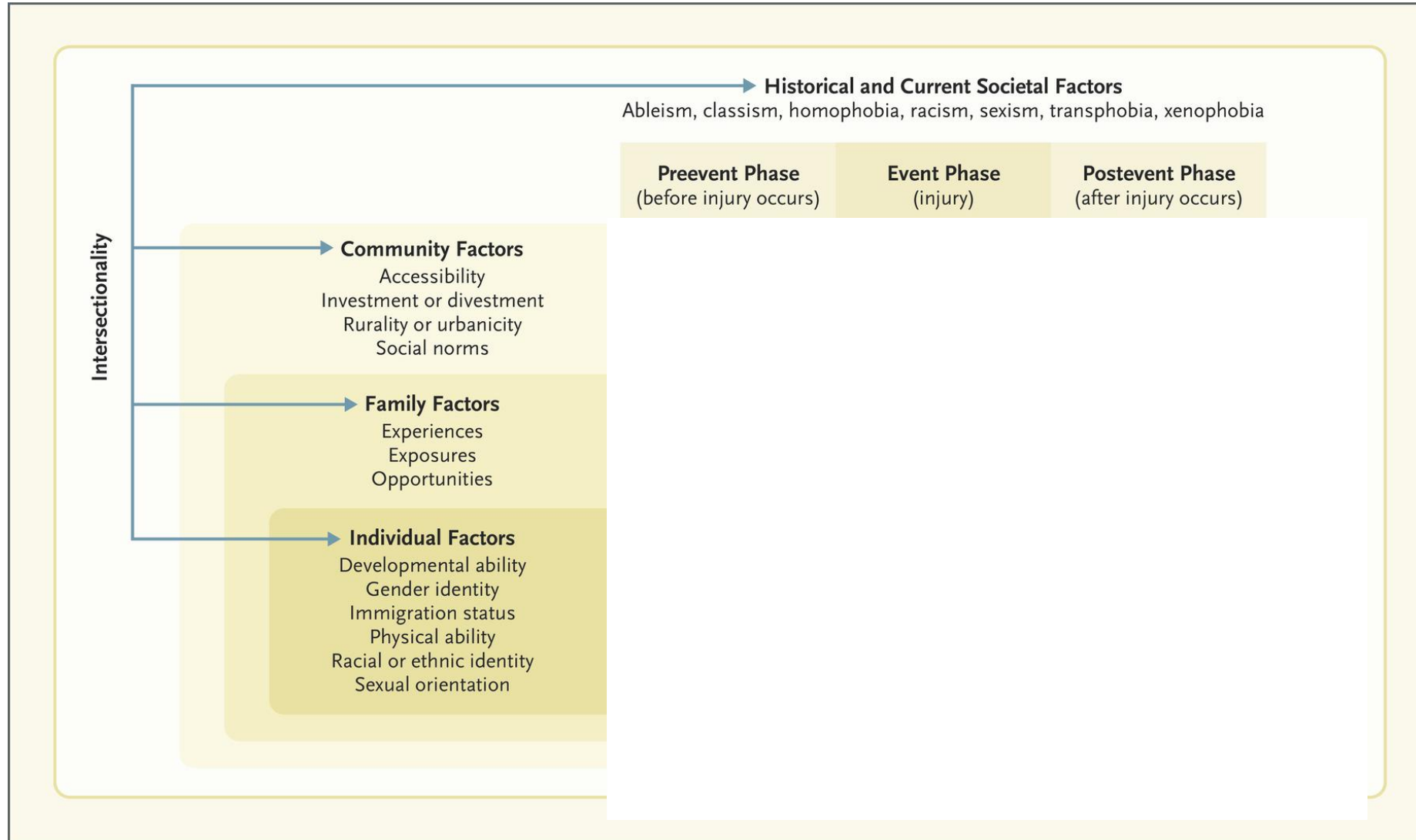
The Injury Equity Framework

Sadiqa Kendi, M.D., M.P.H., and Michelle L. Macy, M.D. N ENGL J MED 388;9 NEJM.ORG MARCH 2, 2023



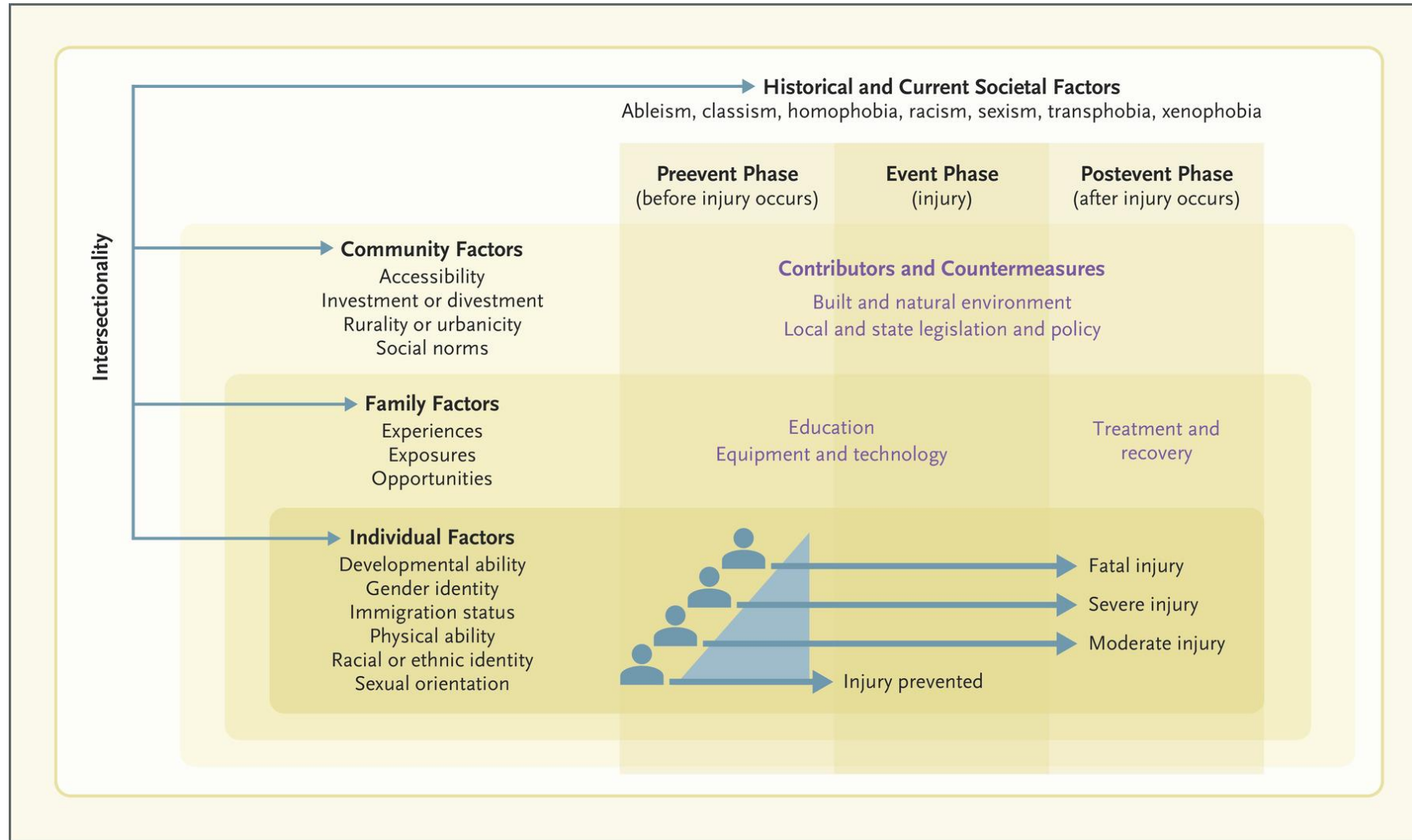
The Injury Equity Framework

Sadiqa Kendi, M.D., M.P.H., and Michelle L. Macy, M.D. N ENGL J MED 388;9 NEJM.ORG MARCH 2, 2023



The Injury Equity Framework

Sadiqa Kendi, M.D., M.P.H., and Michelle L. Macy, M.D. N ENGL J MED 388;9 NEJM.ORG MARCH 2, 2023



Back to the case...



Equity Advisory Committee



Dr. Joseph Wright
Vice President and Chief Health Equity Officer
University of Maryland Medical System

Professor of Pediatrics and Health Policy & Management
University of Maryland Schools of Medicine and Public Health

Safe Kids Worldwide Board Liaison



Dr. Sadiqa Kendi
Division Chief
Pediatric Emergency Medicine Division,
Boston Medical Center and Boston
University School of Medicine

Chief Medical & Equity Officer
Safe Kids Worldwide



Dr. Michelle Macy
Director
Mary Ann & J. Milburn Smith Child Health
Outcomes, Research and Evaluation Center

Scientific Director
Community, Population Health, and
Outcomes, Stanley Manne Children's Research
Institute, Lurie Children's Hospital



Dr. Andrew Kiragu
Associate Professor of Pediatrics
University of Minnesota



Dr. Joelle Simpson
Chief of Emergency Medicine
Children's National Hospital



Morag MacKay
Chief Research and Network Officer
Safe Kids Worldwide



Dr. Kyran Quinlan
Professor
Department of Pediatrics
RUSH Medical College and Chief,
Division of General Pediatrics



Dr. Mark Zonfrillo
Professor of Emergency Medicine and
Pediatrics
Hasbro Children's Hospital and the
Alpert Medical School of Brown
University



Abby Collier
Program Manager
National Center for Fatality Review and
Prevention



Dawne Gardner
Senior Equity Manager
Safe Kids Worldwide

Safe Kids Worldwide: Equity in Child Safety

To protect every child from preventable injury we must prioritize our efforts on identifying and engaging with communities that have been marginalized and underserved and are at increased risk.

While our efforts to raise awareness and educate families need to continue, we also need to pivot to change the systems that have created the inequities we see today.



Examples of Disparities

Black/African American children



American Indian/Alaskan Native children



White children



Asian American children



Children in rural communities



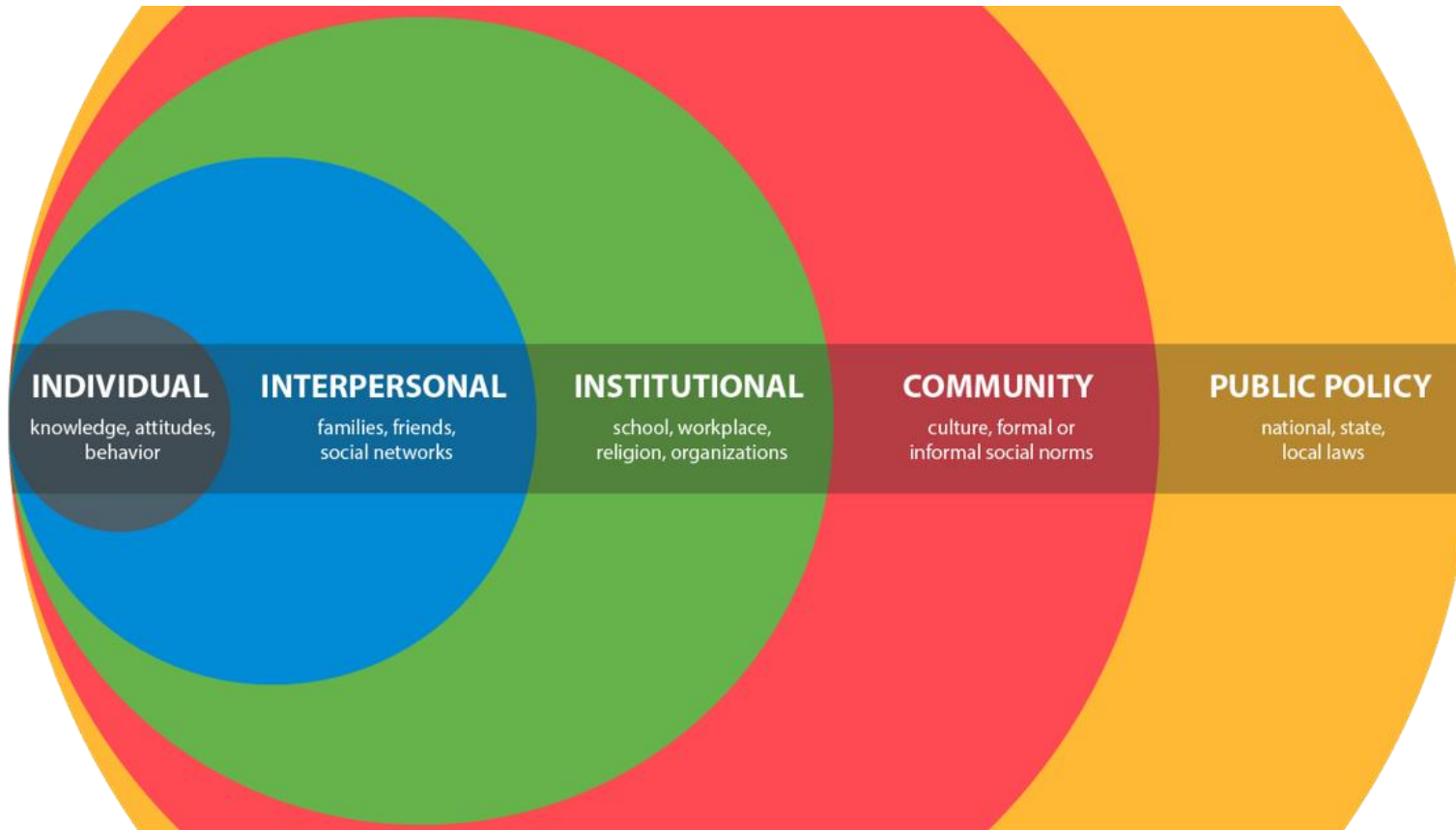
Children in urban communities



Poverty worsens each of these inequities.



Comprehensive Systems Approach



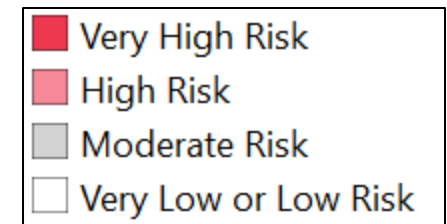
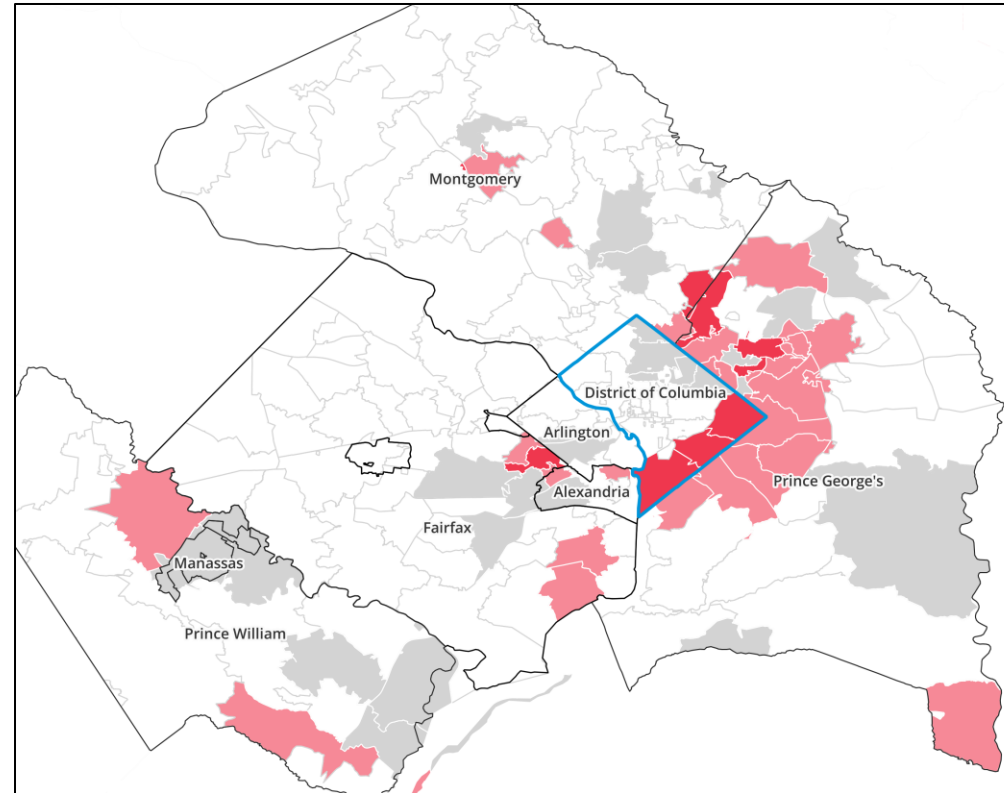
Trifecta of Inclusivity

- ❖ Equity Advisory Committee
- ❖ Strategic Collaborate Group
- ❖ Child Safety Index



Child Safety Index

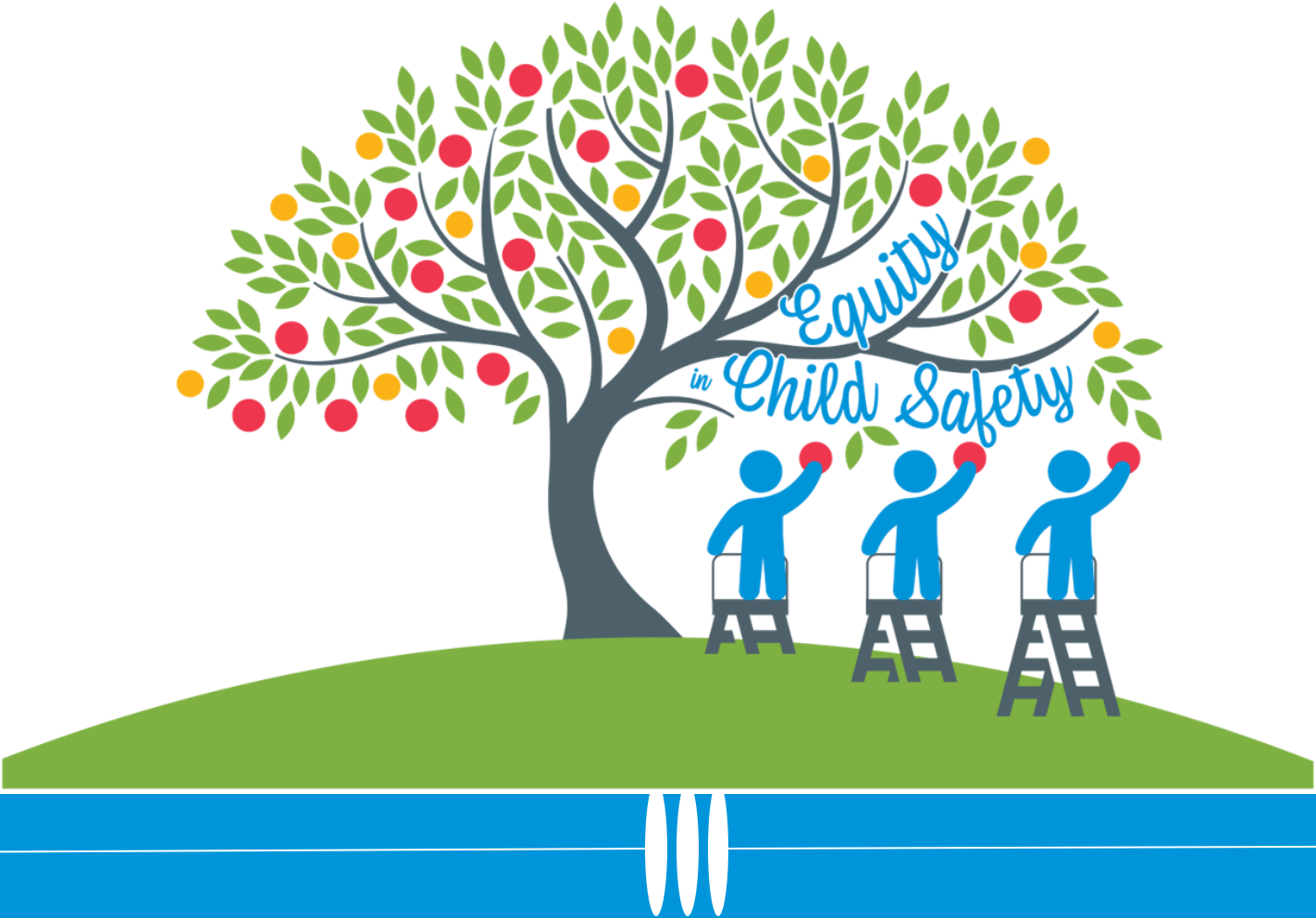
- Safe Kids created the [Child Safety Index \(CSI\)](#) as a tool to identify communities at increased risk of child unintentional injury death.
- Scores are weighted by community characteristics associated with risk.
- Risk categories mapped at the ZIP Code Tabulation Area (ZCTA) level:
 - Very high risk
 - High risk
 - Moderate risk
 - Low or very low risk



When we take this approach, *every* child benefits according to their needs.



Thank You!

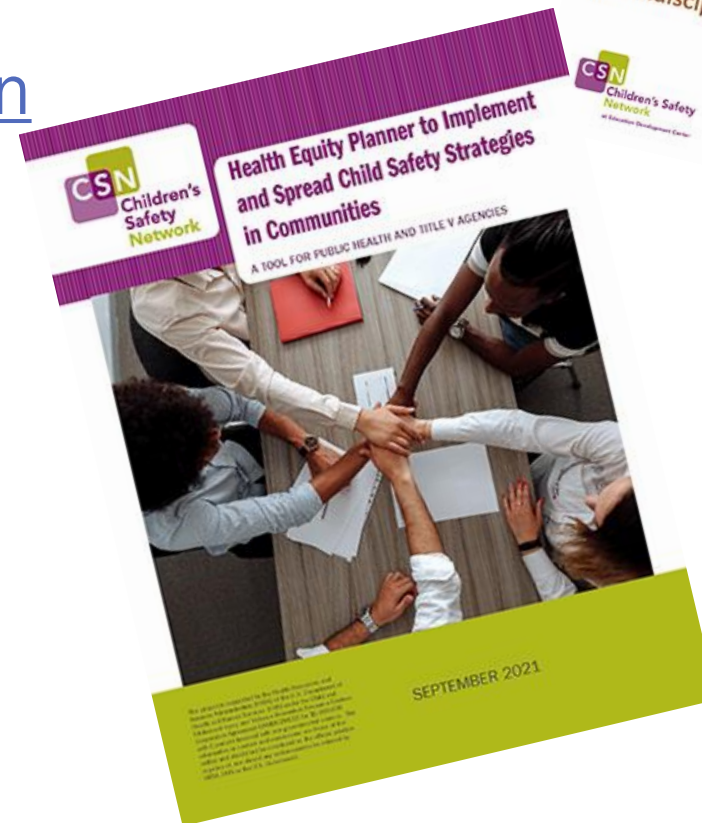


Questions?



How CSN Can Help Your State/Jurisdiction

- [Health Equity on CSN's Website](#)
- Tools
 - [Health Equity Planner to Implement and Spread Child Safety Strategies in Communities](#)
 - [Health Equity: Diversity, Equity, and Inclusion Assessment Guide for Multidisciplinary Teams](#)
- Request Technical Assistance at any time!



Thank you!

Please fill out our evaluation: [January STAW](#)



Visit our website:

www.ChildrensSafetyNetwork.org



Follow us on social media!



Search "Children's Safety Network"



Search "Children's Safety Network"



@ChildrensSafety



@ChildrensSafetyNetwork